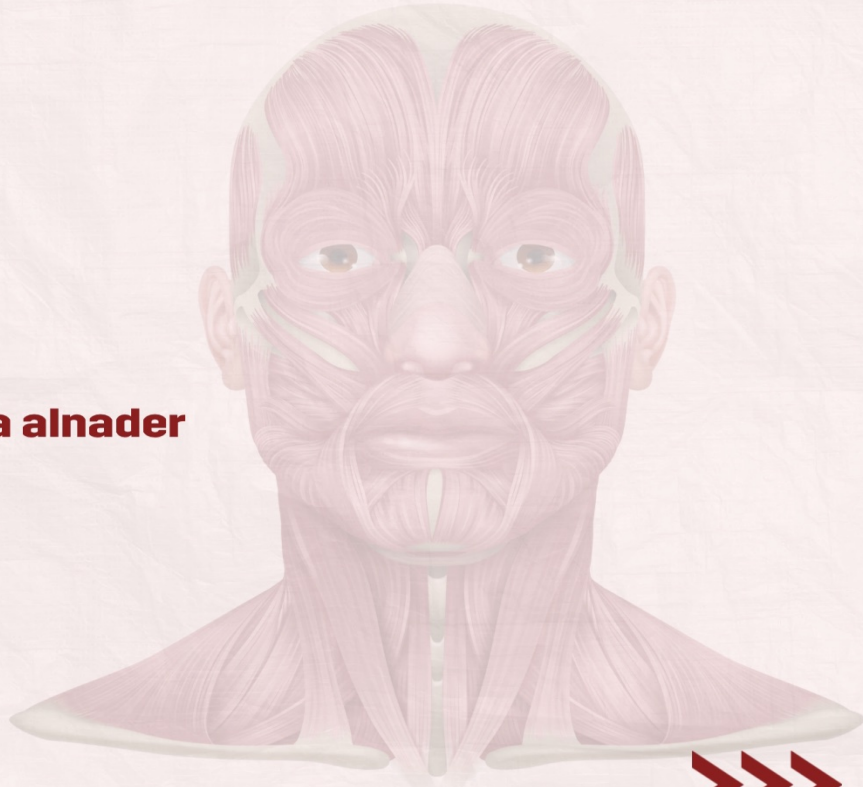




Head and neck anatomy

FILE 1 Past papers

Done by: duha alnader



1- Which of the following structures passes through foramen Rotundum?

- a) Optic nerve
- b) Maxillary nerve
- c) Middle meningeal artery
- d) Ophthalmic artery
- e) Accessory meninges artery

2- Which of the following structures is attached to the lingula of the mandible:

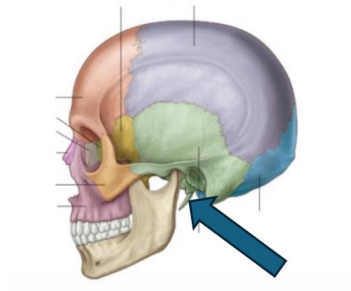
- a) Lateral temporomandibular ligament
- b) Sphenomandibular ligament
- c) Temporalis muscle
- d) Stylomandibular ligament
- e) Pterygomandibular raphe

3- One of the following form medial wall of nasal cavity ?

- a) Horizontal plate of palatine bone.
- b) Palatine process of maxilla.
- c) Perpendicular plate of ethmoid bone.
- d) Lateral pterygoid plate.
- e) Medial pterygoid plate

4- Identify the structure pointed by the blue arrow?

- a) Mastoid process
- b) External acoustic meatus
- c) Styloid process
- d) Spine of sphenoid
- e) Pterygoid process of sphenoid

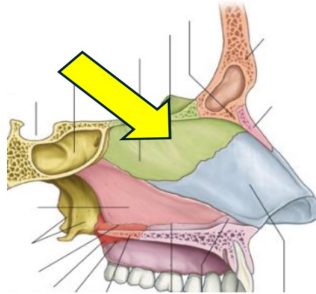


5- Regarding of the pterygo-palatine fossa, choose the **INCORRECT** statement?

- a) It communicates with the nasal cavity via the sphenopalatine foramen.
- b) It communicates with the orbit via the superior orbital fissure.
- c) It communicates with the middle cranial fossa via foramen rotundum.
- d) It communicates with the palate via the greater and lesser palatine foramina.
- e) It communicates with the infratemporal fossa via the pterygomaxillary fissure.

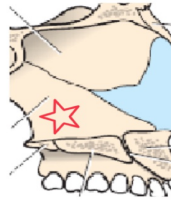
6- The structure pointed by the yellow arrow is :

- a) Vomer
- b) Perpendicular plate of ethmoid
- c) Lacrimal bone
- d) Septal cartilage
- e) Perpendicular plate of palatine



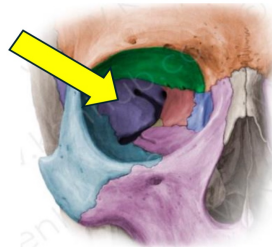
7- The pointed structure represents:

- a) Vomer
- b) Nasal bone
- c) Maxilla
- d) Perpendicular plate of ethmoid
- e) frontal sinus



8- Identify the pointed structure :

- a) Lesser wing of sphenoid
- b) Greater wing of sphenoid
- c) Orbital plate of zygomatic bone
- d) Orbital plate of frontal
- e) Body of sphenoid



9- The hard palate is formed of palatine processes of maxillae and.....

- a) Perpendicular plate of the palatine bone
- b) Orbital plates of the frontal bone
- c) Medial pterygoid plate
- d) Horizontal plates of the
- e) Perpendicular plate of the ethmoid bone

10- Which of the following arteries passes through foramen spinosum?

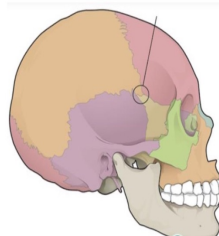
- a) Ophthalmic
- b) Internal carotid
- c) Middle meningeal
- d) Maxillary
- e) Accessory meningeal

11- Which of the following is true regarding neonatal skull?

- a) Anterior fontanelle is ossified by 18 months
- b) Posterior fontanelle is located at the top of the newborn skull
- c) Anterior fontanelle is triangular in shape
- d) Has a mastoid process
- e) The angle of the mandible is right angle

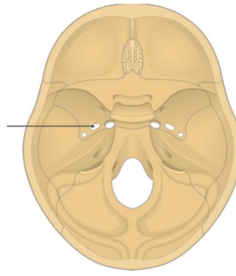
12- The pointed structure is related to:

- a) Maxillary nerve
- b) Zygomaticofacial nerve
- c) Middle meningeal artery
- d) Accessory meningeal artery
- e) Buccal nerve



13- What passes through this foramen?

- a) Mandibular nerve.
- b) Meningeal nerve
- c) Maxillary nerve
- d) Accessory nerve
- e) Facial nerve

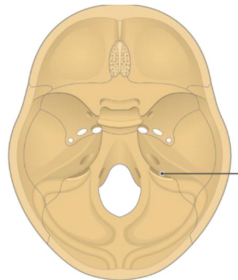


14- Which of the following is not in sphenoid bone

- a) Foramen Rotundum
- b) Jugular foramen
- c) Superior orbital fissure
- d) Optic foramen
- e) Inferior orbital fissure

15- What passes through the pointed structure?

- a) glossopharyngeal nerve.
- b) Accessory nerve
- c) Vagus nerve
- d) All of the above
- e) None of the above



16- Which of the following is not in temporal bone

- a) Foreman ovale
- b) Mastoid process
- c) Tympanic process
- d) Stylomastoid foramen
- e) Articular tubercle

17- Which of the following attach to coronoid process

- a) Lateral pterygoid muscle
- b) Masseter muscle
- c) Styloglossus muscle
- d) Buccinator muscle
- e) Temporalis muscle

18- Which of the following is false about atlas:

- a) Has a small body
- b) Communicates inferiorly with axis via atlanto-axial joint
- c) Has no spinous processes
- d) First cervical vertebra & is a ring-shaped bone
- e) Has two transverse foramina

19- Which of the following is not related to ethmoid bone

- a) Middle nasal concha
- b) Perpendicular plate
- c) Inferior nasal concha
- d) Crista galli
- e) Superior nasal concha

20- The glossopharyngeal nerve exits from skull through ...

- a) Ovale
- b) Jugular
- c) Lacerum
- d) Optic canal
- e) Inferior orbital fissure

21- The inferior orbital fissure is in between the following bone pairs

- a) Greater wings of sphenoid and maxillary bones
- b) Greater wings of sphenoid and zygomatic bones
- c) Greater & lesser wings of sphenoid bone
- d) Sphenoid & ethmoid bones
- e) Palatine bones

22- Which of the following is wrong about the mandible:

- a-Has mandibular foramen on medial side of each ramus
- b-Only movable skull bone
- c-Mandibular foramen is on the lateral side of each ramus
- d-Is a facial bone
- e-Largest facial bone

23- Which of the following is a branch of maxillary artery

- a) External carotid artery
- b) Internal carotid artery
- c) Ophthalmic artery
- d) Accessory meningeal artery
- e) Middle meningeal artery

24- Which of the following statements is wrong about sphenoid bone

- a) Inferior orbital fissure is between greater and lesser wings
- b) Keystone of cranial floor
- c) Located between occipital and ethmoid bones
- d) Has a butterfly shape
- e) Pterygoid processes extend from inferior part of the sphenoid bone

25- All are true about Pterion except :

- a) It's one of the contents of infratemporal fossa
- b) Indicated by H-shaped suture
- c) Superior to midpoint of zygomatic arch
- d) Region where frontal, parietal, temporal and sphenoid bones join
- e) A very dangerous area since middle meningeal artery runs beneath it

~~1-A~~

^b

2-B

3-C

4-C

5-B

6-B

7-A

8-B

~~9-E~~

^D

10-C

11-A

12-C

13-A

14-B

15-D

16-A

17-E

18-A

19-C

20-B

21-A

22-C

23-E

24-A

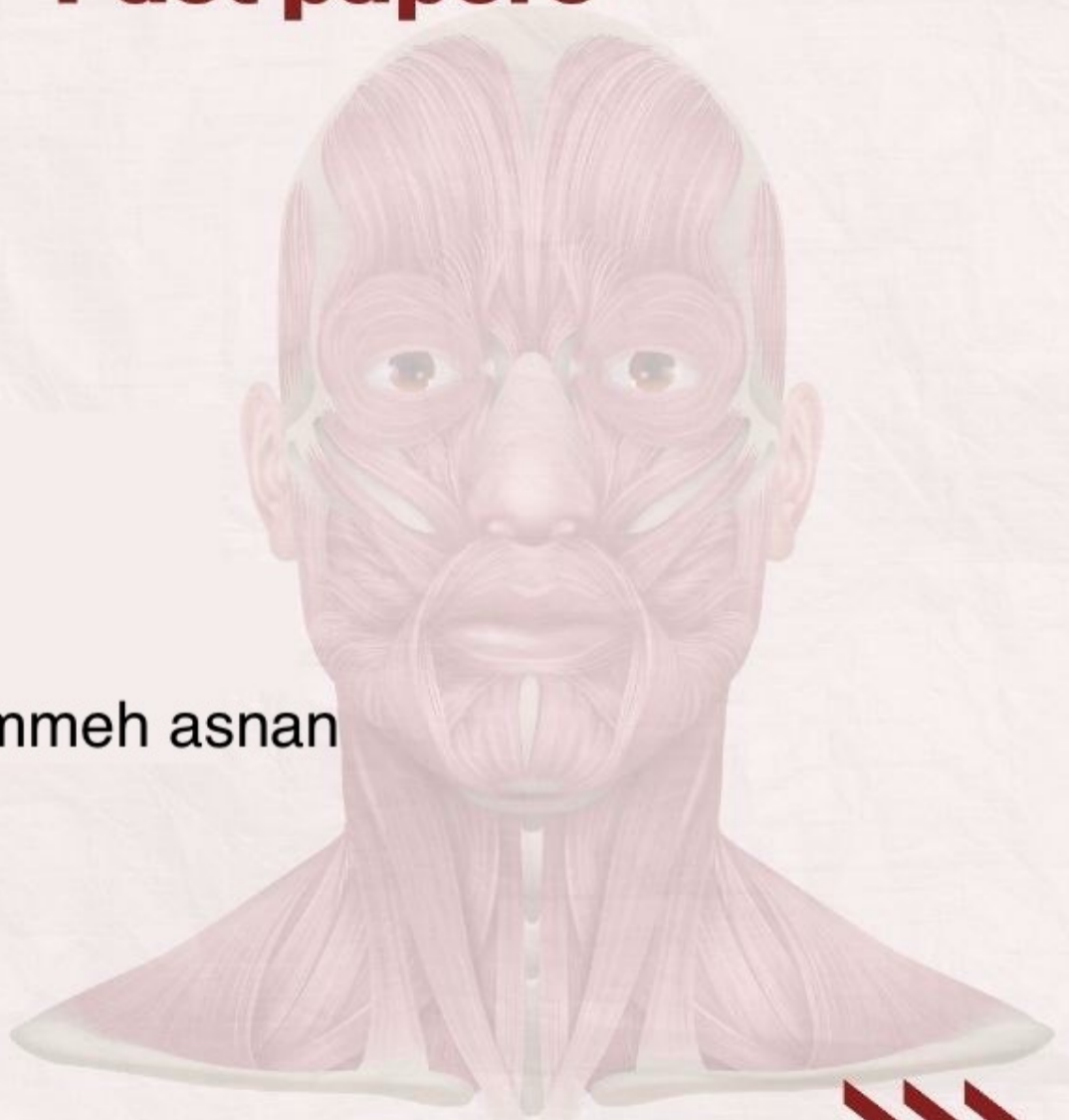
25-A



Head and neck anatomy

FILE 2 Past papers

Done by :hemmeh asnan



Which of the following nerves carries the sensation of the posterior part of the scalp

- a- Posterior auricular of facial nerve
- b- Auriculotemporal
- c- Greater occipital nerve
- d- Marginal mandibular of facial nerve
- e- Temporal of facial nerve

Ans- c

- A patient has a tumor in the central part of the lower lip, the cancer cells would likely spread by _____ lymph nodes.

- a- Submandibular
- b- Superficial cervical
- c- Parotid
- d- Submental
- e- Buccal

Ans-d

The branch of mandibular nerve that supplies the scalp is:

- a- Inferior alveolar
- b- Buccal
- c- Auriculotemporal
- d- Nervous spinosus
- e- Lingual

Ans- c

- Bleeding in which layer of the scalp causes black eye (bleeding around the eye)

- a- Skin
- b- Epicranial aponeurosis
- c- Connective tissue
- d- Loose areolar tissue
- e- Pericranium

Ans-d

The vein which formed by union of posterior auricular vein and the posterior division of retromandibular vein is drained by _____ vein.

- a- Anterior facial
- b- Common facial
- c- Internal jugular
- d- Deep facial
- e- Subclavian

Ans-e

. Infection of the lateral angle of the eyelid leads to enlargement of _____ lymph nodes.

- a- Submental
 - b- Parotid
 - c- Submandibular
 - d- Mastoid
 - e- Occ
- Ans-b

. Which of the following structures passes through foramen Rotundum?

- a- Optic nerve
- b- Maxillary nerve
- c- Ophthalmic artery
- d- Middle meningeal artery
- e- Accessory meningeal artery

Ans-b

The glossopharyngeal nerve exits from skull through ...

- A. Ovale
- B. Jugular
- C. Lacerum
- D. Optic canal
- E. Inferior orbital fissure

Ans b

The Skin and conjunctiva middle part of upper eye lid is supplied by

- A. Supratrochlear
- B. Infratrochlear
- C. Supraorbital
- D. Lacrimal
- E. Zygomaticotemporal

Ans-c

-Which of the following foramina found in the medial wall of pterygopalatine fossa

- A. Pterygomaxillary fissure
- B. Sphenopalatine foramen
- C. Inferior orbital fissure
- D. Greater palatine

Ans-b

The Frontal process of Zygomatic bone is articulating with.

- A. Maxillary process of frontal bone
- B. Zygomatic process of frontal bone
- C. Frontal process of Maxilla
- D. Zygomatic process of temporal bone
- E. Zygomatic process of Maxilla

Ans-b

The hard palate is formed of palatine processes of maxillae and

- A. Perpendicular plate of the palatine bone
- B. Orbital plates of the frontal bone
- C. Medial pterygoid plate
- D. Horizontal plates of the palatin
- E. Perpendicular plate of the ethmoid bone

Ans- d

Which of the following arteries passes through foramen spinosum

- A. Ophthalmic
- B. Internal carotid
- C. Middle meningeal
- D. Maxillary
- E. Accessory meningeal

Ans-c

Wounds of the scalp bleeds profusely because the

- A. Skin
- B. Connective tissue
- C. Epicranial aponeurosis
- D. Loose areolar tissue
- E. Pericranium layer

Ans-b

. Which of the following nerves supplies skin of the forehead up to the vertex

- A. Greater occipital
- B. Supratrochlear
- C. Great auricular
- D. Auriculotemporal
- E. Supraorbital

Ans-e

- All of these are symptoms of cavernous sinus syndrome except:

- a- exophthalmos
- b- Numbness and pain of mandible
- c- venous congestion

Ans-b

- Which of these nerves supply the posterior surface of scalp:

- a- auriculotemporal
- b- greater occipital
- c- B+D
- d- lesser occipital

Ans-c

- Superior orbital fissure is between Greater and lesser wings of sphenoid

- A- true
- B- false

Ans- true

- Sebaceous cyst is rare

A- false

B- true

Ans- a

- about maxillary nerve: lacrimal nerve is direct continuation of it

A- true

B- false

Ans-b

- atlas has big body

a- of course yes

b- of course no

Ans-b

- Maxillary artery supplies scalp

A- true

B- false

Ans-b

Which of the following is true about the lingual nerve:

- Close to third molar

The following are symptoms of cavernous sinus syndrome except:

- Numbness of lower lip

The inferior orbital fissure is in between the following bone pairs:

- Greater wing of sphenoid and maxillary bones

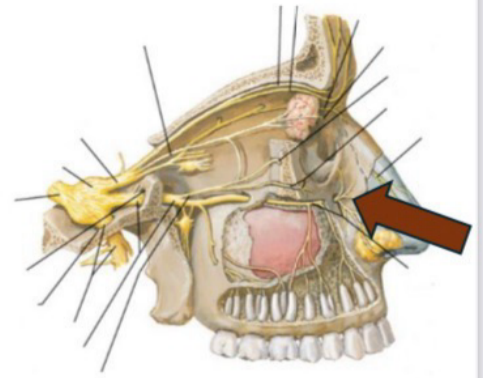
Wrong about scalp:

- Lymphatic drainage by mastoid node anterior to vertex

Done by hemmeh asnan

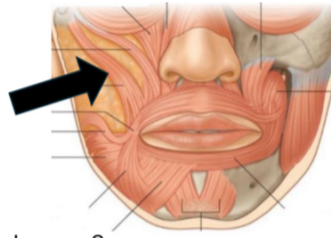
52) identify the structure pointed by brown arrow :

- a) zygomaticotemporal nerve
- b) supraorbital nerve
- c) zygomaticofacial nerve
- d) infraorbital nerve
- e) facial nerve



8) The pointed muscle (black arrow) is .. ?

- a) Buccinator
- b) orbicularis oris
- c) zygomaticus minor
- d) zygomaticus major
- e) mentalis



9) which of the following is INCORRECT about Buccal nerve ?

- a) branch of anterior trunk of mandibular nerve
- b) it is purely sensory
- c) passes between two head of lateral pterygoid muscle
- d) supplies Buccal gingiva of lower incisors
- e) supplies Buccal gingiva of lower molars

14) structure posterior to internal carotid artery ?

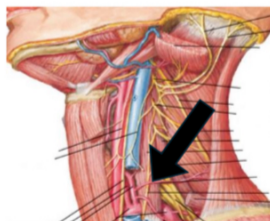
- a) vagus nerve
- b) superior laryngeal nerve
- c) longus capitis
- d) internal jugular vein
- e) glossopharyngeal nerve

17) The structure that passes between sphenomandibular ligament and neck of mandible is ..

- a) Buccal artery
- b) inferior alveolar nerve
- c) 1st part of maxillary artery
- d) 2nd part of maxillary artery
- e) 3rd part of maxillary artery

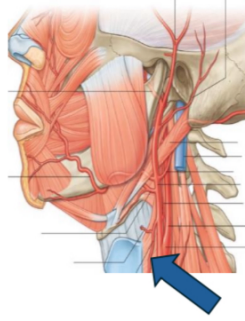
18) the artery pointed by the black arrow is ?

- a) vertebral artery
- b) suprascapular artery
- c) dorsal scapular artery
- d) transverse cervical artery
- e) internal thoracic artery



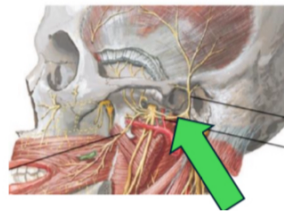
28) The pointed artery (blue arrow) is :

- a) Ascending pharyngeal
- b) lingual
- c) thyroid ima artery
- d) facial
- e) superior thyroid



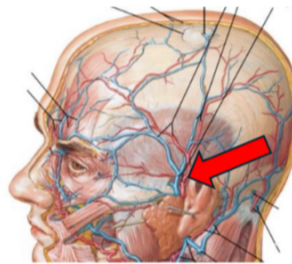
46) the pointed structure is (green arrow) :

- a) Deep temporal nerves
- b) lingual nerve
- c) Auriculotemporal nerve
- d) Buccal nerve
- e) infraorbital nerve



49) identify the structure pointed by the red arrow :

- a) Deep temporal arteries
- b) superficial temporal artery
- c) transverse facial artery
- d) zygomaticotemporal artery
- e) supra orbital artery



47) the structure that passes inferomedial in cavernous sinus is :

- a) oculomotor nerve
- b) Trochlear nerve
- c) Maxillary nerve
- d) ophthalmic nerve
- e) Abducent nerve

5. Which nerve innervates the ala and side of the nose?

A. Ophthalmic nerve

- B. Maxillary nerve
- C. Mandibular nerve
- D. Facial nerve

Answer: B.

8. Which of the following is NOT true about the auriculotemporal nerve?

- A. Carries parasympathetic fibers to the parotid gland
- B. Provides sensation to the external ear
- C. To submandibular gland
- D. Supplies the temporomandibular joint (TMJ)

Answer: C.

14. Which of the following is NOT in the second part of the maxillary artery?

A. Buccal artery

- B. Pterygoid artery
- C. Middle meningeal artery
- D. Masseteric artery

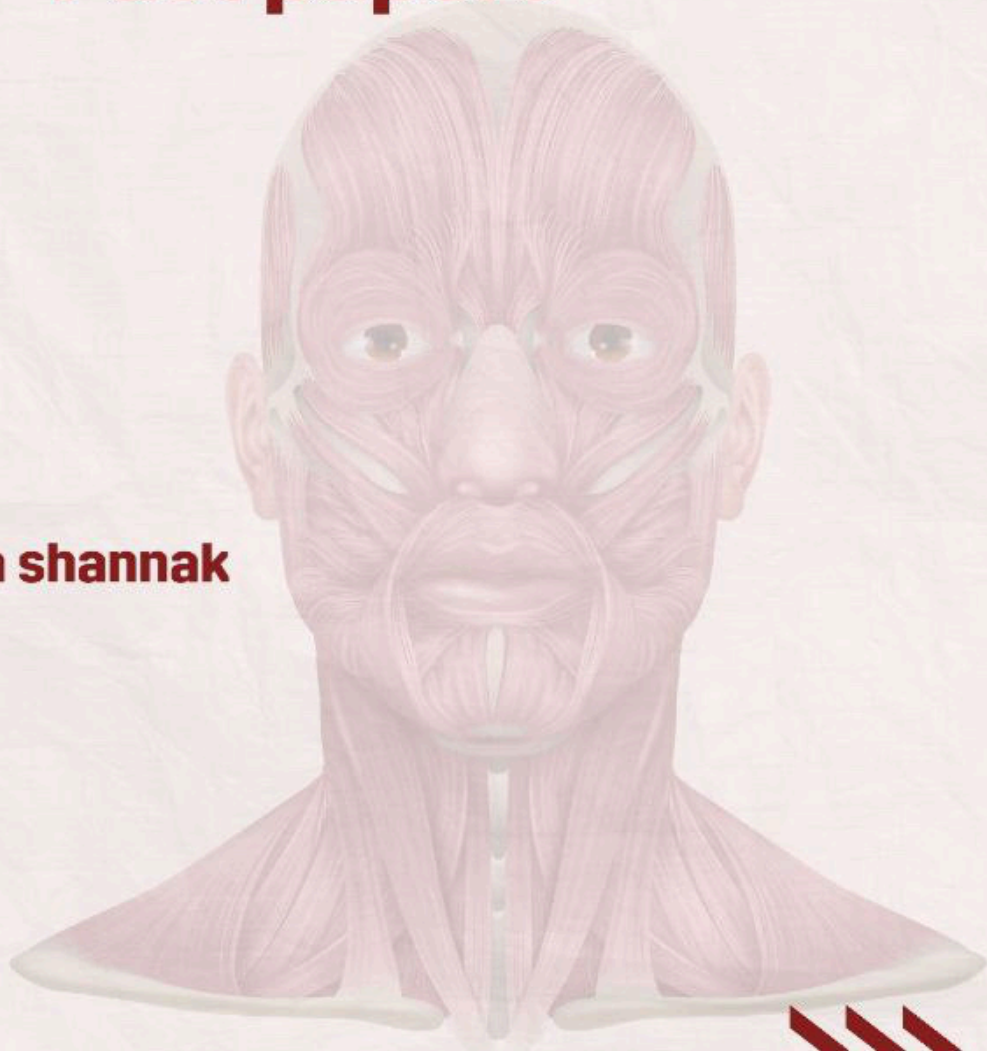
Answer: C



Head and neck anatomy

FILE 3 Past papers

Done by: sama shannak



1. Lesser petrosal nerve:

- a. Sensory fibers to the lacrimal gland
- b. Postganglionic sympathetic fibers to the submandibular gland
- c. Motor fibers to the muscles of mastication
- d. Preganglionic parasympathetic fibers to the parotid gland

2. Greater petrosal nerve is from the

- a. Mandibular nerve
- b. Glossopharyngeal nerve
- c. Facial nerve
- d. Trigeminal nerve

3. Innervates the ala and side of the nose:

- a. Maxillary nerve
- b. Glossopharyngeal nerve
- c. Mandibular nerve
- d. Ophthalmic nerve

4. Not a content of the temporal fossa:

- a. Temporalis muscle
- b. Middle meningeal artery
- c. Deep temporal arteries
- d. Temporal fascia

5. What passes through the sphenopalatine foramen?

- a. Nasopalatine nerve
- b. Auriculotemporal nerve
- c. Lingual nerve
- d. Infraorbital nerv

6. Not true about auriculotemporal nerve?

- a. Carries postganglionic parasympathetic fibers to the parotid gland
- b. To submandibular
- c. Provides sensory innervation to the TMJ
- d. Associated with the middle meningeal artery

7. TMJ covered by :

- a. Covered by elastic cartilage
- b. Covered by hyaline cartilage
- c. Covered by periosteum
- d. Covered by fibrocartilage

8. Which of the following attach to coronoid process?

- a. Masseter
- b. Medial pterygoid
- c. Buccinator
- d. Temporalis

9. Not in the 2nd part of the maxillary artery:

- a. Pterygoid arteries
- b. Masseteric artery
- c. Middle meningeal artery
- d. Buccal artery

10. Mismatched:

- a. Zygomatic branch supplies orbicularis oculi
- b. Zygomatic branch supplies muscles of facial expression
- c. Zygomatic branch supplies lacrimal gland
- d. Zygomatic branch supplies skin over zygomatic bone

11. Not a branch of the anterior division of mandibular nerve:

- a. Masseteric nerve
- b. Deep temporal nerves
- c. Buccal nerve
- d. Nerve to medial pterygoid

12. 3rd molar extraction:

- a. Auriculotemporal nerve
- b. Inferior alveolar nerve
- c. Lingual nerve
- d. Buccal nerve

13. Medial to pterygopalatine fossa:

- a. Perpendicular plate of palatine bone
- b. Maxillary tuberosity
- c. Infratemporal crest
- d. Pterygoid plates

14. Lateral to infratemporal fossa:

- a. Lateral pterygoid plate
- b. Maxillary artery
- c. Medial of ramus of mandible
- d. Temporalis muscle

15. Not in the temporal fossa:

- a. Temporalis muscle
- b. Temporal fascia
- c. Deep temporal arteries
- d. Middle meningeal artery

16. Not in the infratemporal fossa:

- a. Pterygoid venous plexus
- b. Pterygoid muscles
- c. Maxillary nerve
- d. Maxillary artery

17. Lower 6 molar extraction:

- a. Lingual nerve
- b. Mental nerve
- c. Buccal nerve
- d. Inferior alveolar nerve

18. Which of the following arteries passes through foramen spinosum?

- A. Ophthalmic
- B. Internal carotid
- C. Middle meningeal
- D. Maxillary
- E. Accessory meningeal

19. The Skin and conjunctiva middle part of upper eye lid is supplied by

- A. Supratrochlear
- B. Infratrochlear
- C. Supraorbital
- D. Lacrimal
- E. Zygomaticotemporal

20. Which of the following structures is located in the posterior wall of the infratemporal fossa?

- A. Lateral pterygoid plate
- B. Ramus of the mandible
- C. Masseter muscle
- D. Styloglossus muscle
- E. Posterior surface of the maxilla

21. The lingual nerve is covered with gingival mucosa only at tooth:

- A. Lower 2nd molar
- B. Upper 3ed molar
- C. Upper 2nd molar
- D. Lower 2nd premolar
- E. lower 3ed molar

22. The hard palate is supplied by:

- A. Greater palatine, nasopalatine
- B. Lesser palatine, nasopalatine
- C. Greater palatine, greater petrosal
- D. Nasopalatine, zygomaticotemporal
- E. Greater palatine, Lesser palatine

23. To test the function of mandibular nerve you can ask the patient to

- A. Close his mouth
- B. Taste sugar when placed on anterior part of the tongue
- C. Close his eye firmly
- D. Blow his cheek
- E. Show his teeth or smile

24. Regarding maxillary nerve choose the CORRECT statement

- A. Leaves skull through foramen ovale
- B. Passes through superior orbital fissure
- C. Passes through medial wall of cavernous sinus
- D. It is a mixed nerve
- E. It supplies the skin of the upper lip

25. Regarding facial nerve choose the INCORRECT statement

- A. It exits from the skull through stylomastoid foramen
- B. It supplies the skin over buccinator's muscle
- C. It carries preganglionic parasympathetic fibers
- D. It supplies stapedius muscle
- E. It supplies stylohyoid muscle

26. In inferior alveolar nerve block technique ; all the following areas are anesthetized EXCEPT

- A. All buccal gingiva and mucosa from the molar to the premolars
- B. All lower jaw teeth
- C. Epithelium of the anterior 2/3 of the tongue
- D. All lingual gingiva and lingual mucosa
- E. Skin of the lower lip

27. The feeling that the ice cream is very cold is carried by

- A. Chorda tympani
- B. Greater petrosal
- C. Lesser petrosal
- D. Lingual
- E. Inferior alveolar

28. Which of the following nerves carry postganglionic sympathetic fibers.....nerve

- A. Greater petrosal
- B. Lesser petrosal
- C. Deep petrosal
- D. Supraorbital
- E. Anterior superior alveolar

29. The floor of pterygopalatine fossa is made of

- A. Perpendicular plate of the palatine bone
- B. Pterygoid process
- C. Greater wing of sphenoid
- D. Pyramidal process of palatine bone
- E. Posterior wall of the maxilla

30. Which of the following foramina found in the medial wall of pterygopalatine fossa

- A. Pterygomaxillary fissure
- B. Sphenopalatine foramen
- C. Inferior orbital fissure
- D. Greater palatine foramina
- E. Foramen ovale

31. The pharyngeal nerve passes through

- A. Greater palatine foramen
- B. Pterygoid canal.
- C. Palatovaginal canal
- D. Lesser palatine foramen
- E. Carotid canal

32. A patient has decay in right upper 2nd premolar and lateral incisor teeth , what the best type of nerve block can be used?

- A. Anterior superior alveolar nerve block
- B. Middle superior alveolar nerve block
- C. Posterior superior alveolar nerve block
- D. Infraorbital nerve block
- E. Nasopalatine nerve block

33. The posterior border of the parotid gland is related to _____.

- a- Masseter
- b- Parotid lymph
- c- Zygomatic branch of facial nerve
- d- Sternomastoid
- e- Medial pterygoid

34. You feel that the food is very sweet. This sensation is carried by _____ nerve.

- a- Chorda tympani
- b- Greater petrosal
- c- Lesser petrosal
- d- Inferior alveolar
- e- Lingual

35. Which of the following structures passes through foramen Rotundum?

- a- Optic nerve
- b- Maxillary nerve
- c- Ophthalmic artery
- d- Middle meningeal artery
- e- Accessory meningeal artery

36. During extraction of the lower third molar teeth the nerve that passes in the mucosa (beside 3rd molar teeth) is injured, this patient will complain of _____.

- a- Loss of sensation over the cheek.
- b- Inability to open the mouth.
- c- Loss of general sensation of anterior 2/3 of the tongue.
- d- Inability to close the mouth.
- e- Lose sensation from root of the lower 3rd molar teeth.

37. Which of the following nerve contains postganglionic parasympathetic fibers?

- a- Inferior alveolar
- b- Greater petrosal
- c- Glossopharyngeal
- d- Greater auricular
- e- lesser Petrosal

38. Pain sensation from the lower eyelid is carried by:

- a- Infratrochlear
- b- Supraorbital
- c- Infraorbital
- d- Auriculotemporal
- e- Supratrochlear

39. Which of the following structures is attached to the lingula of the mandible:

- a- Lateral temporomandibular ligament
- b- Sphenomandibular ligament
- c- Temporalis muscle
- d- Stylomandibular ligament
- e- Pterygomandibular raphe

40. The that supplies the muscles of mastication merges from:

- a- Jugular foramen
- b- Superior orbital fissure
- c- Optic canal
- d- Foramen ovale
- e- Foramen spinosum

41. which of the following structure passes through pterygomaxillary fissure?

- a- Inferior alveolar nerve
- b- Maxillary artery
- c- Mandibular nerve
- d- Facial artery
- e- Maxillary nerve

42. The branch of mandibular nerve that supplies the scalp is:

- a- Inferior alveolar
- b- Buccal
- c- Auriculotemporal
- d- Nervous spinosus
- e- Lingual

43. Which of the following structures connect foramen lacerum and pterygopalatine fossa?

- a- Foramen ovale
- b- Foramen Rotundum
- c- Pterygoid canal
- d- Pharyngeal canal
- e- Palatovaginal canal

44. The artery that emerges from the anterior border of parotid gland is a branch of __artery.

- a- Maxillary
- b- Superficial temporal
- c- External carotid
- d- Facial
- e- Internal carotid

45. Which of the following structures is located in the superficial part of infratemporal fossa?

- a- Medial pterygoid muscle
- b- Tensor palati muscle
- c- Middle meningeal artery
- d- Otic ganglion
- e- Accessory meningeal artery

46. During extraction of the lower third molar teeth, the dentist should inject the anesthesia around _____ nerve.

- a- Inferior alveolar
- b- Posterior superior alveolar
- c- Lingual
- d- Mylohyoid
- e- Auriculotemporal

47. Which of the following structures prevents posterior dislocation of the temporomandibular joint?

- a- Lateral temporomandibular ligament
- b- Masseter muscle
- c- Sphenomandibular ligament
- d- Temporalis muscle
- e- Stylomandibular ligament

48. Regarding of the pterygo-palatine fossa, choose the INCORRECT statement.

- a- It communicates with the nasal cavity via the sphenopalatine foramen.
- b- It communicates with the orbit via the superior orbital fissure.
- c- It communicates with the middle cranial fossa via foramen rotundum.
- d- It communicates with the palate via the greater and lesser palatine foramina.
- e- It communicates with the infratemporal fossa via the pterygomaxillary fissure.

49. Which of the following muscles attaches to the infratemporal surface of the greater wing of sphenoid?

- a- Superficial head of medial pterygoid
- b- Masseter
- c- Lower head of lateral pterygoid
- d- Upper head of lateral pterygoid
- e- Deep head of medial pterygoid

50. Deep to the neck of mandible:

- a. External carotid artery
- b. Facial artery
- c. Posterior auricular artery
- d. Maxillary artery

51. Which of the following arteries is a branch from the third part of the maxillary artery?

- a. Middle meningeal artery
- b. Anterior tympanic artery
- c. Inferior alveolar artery
- d. Greater palatine artery

52. Destruction in which muscle will lead to difficulty in retraction of the mandible?

- a. Lateral pterygoid
- b. Masseter
- d. Medial pterygoid
- c. Temporalis

53. The inferior orbital fissure is in between the following bone pairs:

- a. Frontal and ethmoid bones
- b. Greater and lesser wings of sphenoid
- c. Zygomatic and temporal bones
- d. Greater wing of sphenoid and maxillary bones

54. Parasympathetic fibers of the pterygopalatine ganglion?

- a. Lesser petrosal nerve
- b. Auriculotemporal nerve
- c. Deep petrosal nerve
- d. Greater petrosal nerve

55. Which of the following is wrong about the nerve supply to the face?

- a. The infraorbital nerve supplies the skin below the eye
- b. The lacrimal nerve supplies the skin on the medial part of the upper eyelid
- c. The buccal nerve is a branch of the mandibular nerve
- d. The mental nerve supplies the chin

56. Which nerve originates from the back of the brainstem?

- a. Oculomotor nerve
- b. Hypoglossal nerve
- c. Facial nerve
- d. Trochlear nerve

57. Protrusion and depression of the mandible is the function of:

- a. Masseter
- b. Medial pterygoid
- c. Temporalis
- d. Lateral pterygoid

58. Which of the following is true about the lingual nerve:

- a. Supplies motor innervation to the tongue
- b. Contains postganglionic sympathetic fibers
- c. Originates in the pterygopalatine fossa
- d. Close to the third molar

59. Which of the following is wrong?

- a. The zygomaticotemporal nerve supplies the temporal region
- b. Lacrimal nerve is a terminal branch from maxillary nerve
- c. The greater palatine nerve is a branch of the maxillary nerve
- d. Maxillary nerve branches include the infraorbital nerve

60. A branch of the maxillary artery:

- a. Superior thyroid artery
- b. Facial artery
- c. Middle meningeal artery
- d. Lingual artery

61. Not a branch from the facial artery:

- a. Angular artery
- b. Superior labial artery
- c. Buccal
- d. Inferior labial artery

62. One of the following innervates the anterior part of the scalp:

- a. Posterior auricular nerve
- b. Zygomaticotemporal nerve
- c. Greater occipital nerve
- d. Auriculotemporal

63. Which of the following is wrong?

- a. Angular artery supplies the side of the nose
- b. Upper lip is supplied by maxillary artery
- c. Facial artery supplies the lips
- d. Labial arteries branch from the facial artery

64. Which of the following is attached to the spine of sphenoid?

- a. Sphenomandibular ligament
- b. Temporalis muscle
- c. Stylomandibular ligament
- d. Pterygomandibular raphe

65. Which is not from the anterior division of the mandibular nerve?

- a. Deep temporal nerve
- b. Buccal nerve
- c. Masseteric nerve
- d. Nerve to medial pterygoid

66. One of the following is innervated by the maxillary nerve:

- a. Mandibular molars
- b. Skin of the chin
- c. Anterior tongue
- d. Upper jaw teeth

67. A patient had his mandibular third molar extracted and lost general sensation and taste of the anterior two-thirds of the tongue. Which nerve is affected?

- a. Buccal nerve
- b. Mental nerve
- c. Inferior alveolar nerve
- d. Lingual nerve

68. Someone with numbness in the lower lip due to a problem in:

- a. Inferior alveolar nerve
- b. Lingual nerve
- c. Buccal nerve
- d. Mental nerve

69. In order to extract the lower molars, the dentist should anesthetize:

- a. Inferior alveolar nerve
- b. Lingual nerve
- c. Buccal nerve
- d. Mental nerve

70. The muscle that depresses the mandible:

- a. Temporalis
- b. Medial pterygoid
- c. Lateral pterygoid
- d. Masseter

71. Which nerve doesn't pass through the inferior orbital fissure?

- a. Greater palatine nerve
- b. Zygomatic nerve
- c. Infraorbital nerve
- d. Orbital branches of the pterygopalatine ganglion

72. Which artery is not a branch from the first part of the maxillary artery?

- a. Deep auricular artery
- b. Inferior alveolar artery
- c. Posterior auricular
- d. Anterior tympanic artery

73. Which muscle is not innervated by the mandibular nerve?

- a. Temporalis
- b. Medial pterygoid
- c. Buccinator muscle
- d. Masseter

74. False about the facial artery:

- a. Branches into the angular artery
- b. Passes deep to the submandibular gland
- c. Supplies the lips and nose
- d. Ascends over the parotid gland

75. Wrong about the posterior superior alveolar nerve?

- a. Passes through the posterior superior alveolar foramina
- b. Innervates maxillary molars
- c. Innervates maxillary premolars and maxillary sinus
- d. Supplies the mucosa of the maxillary sinus

76. Wrong about mandibular and maxillary nerves:

- a. Mandibular nerve is a branch of CN V
- b. Maxillary nerve passes through the pterygopalatine fossa
- c. Mandibular nerve provides motor branches to mastication muscles
- d. The nerve passing through foramen rotundum innervates mandibular molars and muscles of mastication

77. Wrong about the inferior alveolar nerve:

- a. Enters the mandibular foramen
- b. Gives off the mental nerve
- c. Provides sensory innervation to mandibular teeth
- d. It supplies the premolars and molars

78. Wrong about the mandibular nerve:

- a. Passes through the foramen ovale
- b. Nerve to mylohyoid branches from inferior alveolar in the mandibular canal
- c. Supplies motor innervation to muscles of mastication
- d. Contains sensory and motor components

79. Branch from the 1st part of the maxillary artery:

- a. Posterior superior alveolar artery
- b. Deep temporal artery
- c. Masseteric artery
- d. Anterior tympanic

80. Related to the last molar tooth and is liable to be damaged in cases of clumsy extraction of an impacted third molar or if the mandible is broken:

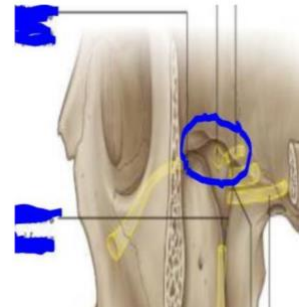
- a. Buccal nerve
- b. Inferior alveolar nerve
- c. Lingual nerve
- d. Mental nerve

81. What passes through the foramen ovale?

- a. Middle meningeal artery
- b. Deep temporal nerve
- c. Maxillary nerve
- d. Mandibular nerve

82. The blue circle represents:

- a. Infraorbital foramen
- b. Pterygoid canal
- c. Sphenopalatine foramen
- d. Foramen rotundum



83. Wrong about the lingual nerve?

- a. Close to the third molar
- b. It originates from the pterygopalatine fossa
- c. Joins the chorda tympani
- d. Lies near the submandibular duct

84. Pulse anterior to the external auditory meatus?

- a. Maxillary artery
- b. Posterior auricular artery
- c. Facial artery
- d. Superficial temporal artery

85. A patient has a tumor around foramen rotundum which of the following glands will be affected?

- a. Submandibular salivary
- b. Sublingual salivary
- c. Parotid
- d. Lacrimal
- e. Submandibular lymph nodes

86. Gateway between pterygopalatine fossa & middle cranial fossa?

- a. Pterygoid canal + foramen rotundum
- b. Sphenopalatine foramen
- c. Foramen ovale
- d. Inferior orbital fissure

87. Wrong about the lingual nerve?

- a. It lies close to the third molar
- b. Combines with the chorda tympani in the pterygopalatine fossa
- c. It passes medial to the mandible
- d. It carries parasympathetic fibers

88. One of them does not exist in the infratemporal fossa:

- a. Inferior alveolar nerve
- b. Mandibular nerve
- c. Pterygoid venous plexus
- d. Maxillary nerve

89. Pulse anterior to the ear?

- a. Occipital artery
- b. Superficial temporal artery
- c. Posterior auricular artery
- d. Maxillary artery

90. Anesthesia when working on the first molar?

- a. Inferior alveolar nerve
- b. Lingual nerve
- c. Mental nerve
- d. Buccal nerve

91. One of them is not a branch from the second part of the maxillary artery?

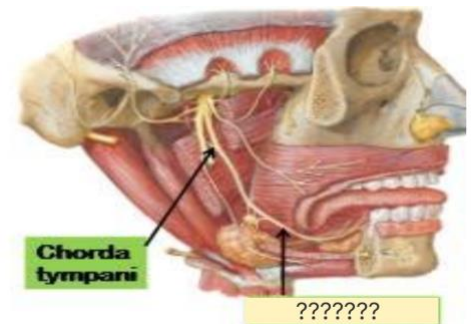
- a. Masseteric artery
- b. Buccal artery
- c. Deep temporal artery
- d. Inferior alveolar artery

92. Nerve that passes through the inferior orbital fissure:

- a. Greater palatine nerve
- b. Mental nerve
- c. Nasopalatine nerve
- d. Zygomatic nerve

93. Identify the nerve:

- a. Facial nerve
- b. Lingual nerve
- c. Maxillary nerve
- d. Deep temporal



94. which of the following supplies the buccal gingiva of lower molars ?

- a. posterior superior alveolar artery
- b. inferior alveolar artery
- c. greater palatine artery
- d. anterior superior alveolar nerv
- e. facial artery

95. The structure that passes between sphenomandibular ligament and neck of mandible is ..

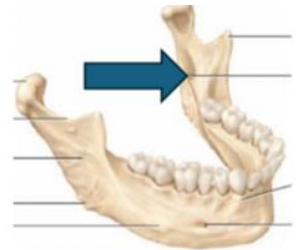
- a. Buccal artery
- b. inferior alveolar nerve
- c. 1st part of maxillary artery
- d. 2nd part of maxillary artery
- e. 3rd part of maxillary artery

96. Facial nerve is in And walls of middle ear :

- a. medial and lateral
- b. medial and posterior
- c. anterior and posterior
- d. lateral and posterior
- e. roof and posterior

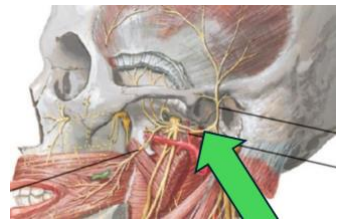
97. which of the following passes through the pointed foramen(blue arrow) :

- a. Glossopharyngeal nerve
- b. Buccal nerve
- c. Inferior alveolar nerve
- d. Mylohyoid nerve
- e. Hypoglossal nerve



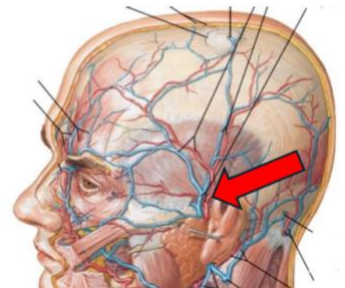
98. the pointed structure is (green arrow) :

- a. Deep temporal nerves
- b. Lingual nerve
- c. Auriculotemporal nerve
- d. Buccal nerve
- e. Infraorbital nerve



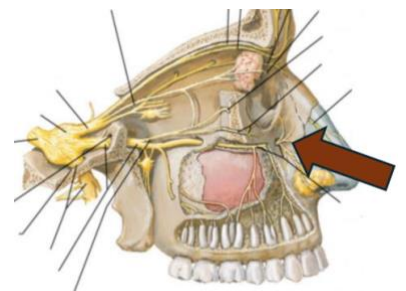
99. Identify the structure pointed by the red arrow :

- a. Deep temporal arteries
- b. superficial temporal artery
- c. transverse facial artery
- d. zygomaticotemporal artery
- e. supra orbital artery



100. identify the structure pointed by brown arrow :

- a. zygomaticotemporal nerve
- b. supraorbital nerve
- c. zygomaticofacial nerve
- d. infraorbital nerve
- e. facial nerve



101. Which of the following muscle depresses and protrudes the mandible?

- a. Temporalis
- b. Buccinator
- c. Lateral pterygoid
- d. Medial pterygoid
- e. Masseter

102. Sympathetic innervation for lacrimal gland originally from?

- a. greater petrosal nerve
- b. zygomaticofacial nerve
- c. deep petrosal nerve
- d. lesser petrosal
- e. Auriculotemporal nerve

1 D	31 C	61 C	91 D
2 C	32 D	62 D	92 D
3 A	33 D	63 B	93 B
4 B	34 A	64 A	94 B
5 A	35 B	65 D	95 C
6 B	36 C	66 D	96 B
7 D	37 E	67 D	97 C
8 D	38 C	68 D	98 C
9 C	39 B	69 A	99 B
10 D	40 D	70 C	100 D
11 D	41 B	71 A	101 C
12 C	42 C	72 C	102 C
13 A	43 C	73 C	
14 C	44 B	74 D	
15 D	45 A	75 C	
16 C	46 A	76 D	
17 D	47 A	77 D	
18 C	48 B	78 B	
19 C	49 D	79 D	
20 D	50 D	80 C	
21 E	51 D	81 D	
22 A	52 C	82 C	
23 A	53 D	83 B	
24 E	54 D	84 D	
25 B	55 B	85 D	
26 A	56 D	86 A	
27 D	57 D	87 B	
28 C	58 D	88 D	
29 D	59 B	89 B	
30 B	60 C	90 A	

Good luck