

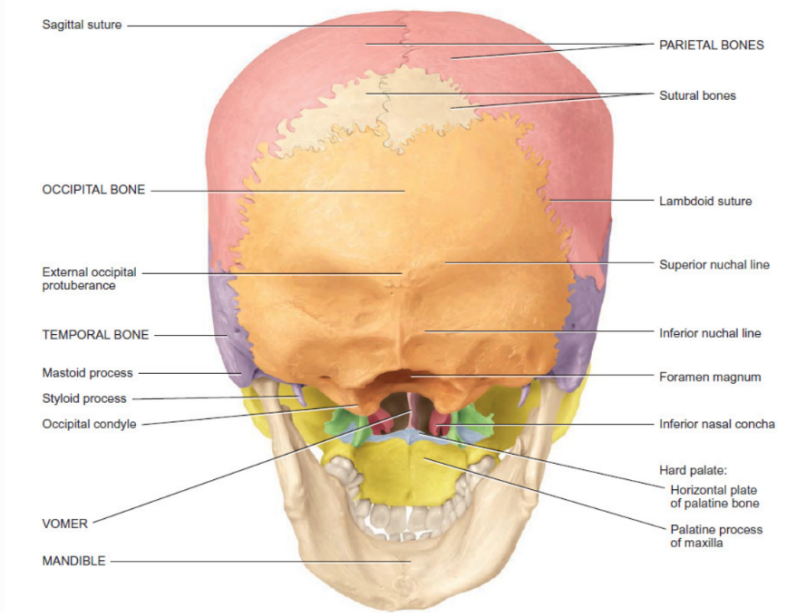
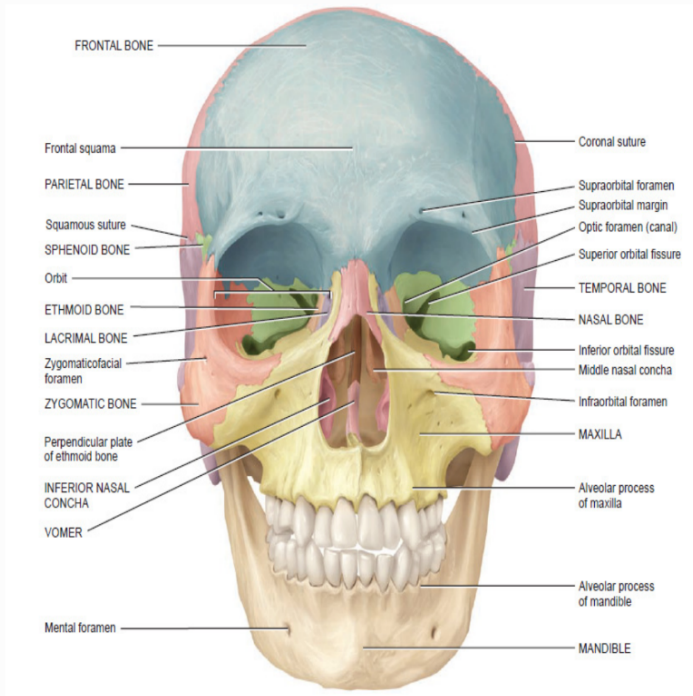
SUMMARY OF LAB MATERIAL

Head & Neck Anatomy

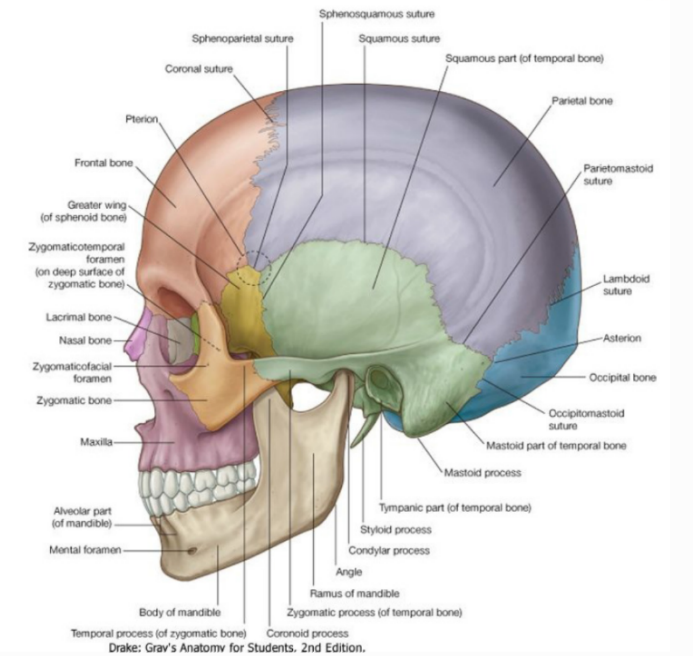
BY : HEMMEH ASNAN



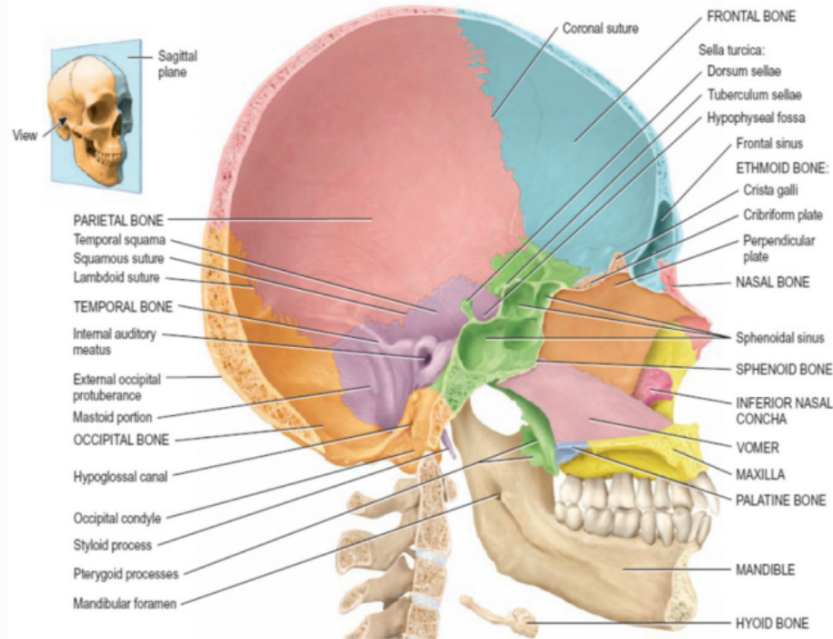
Skull



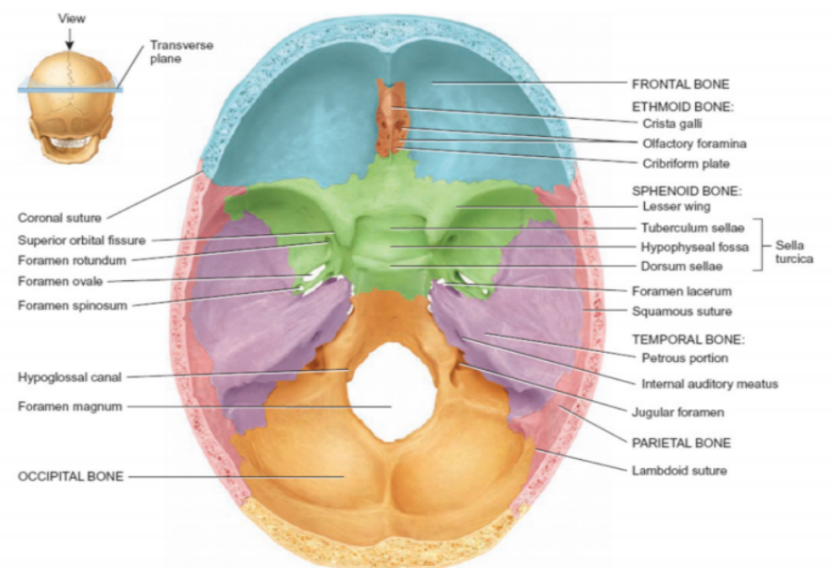
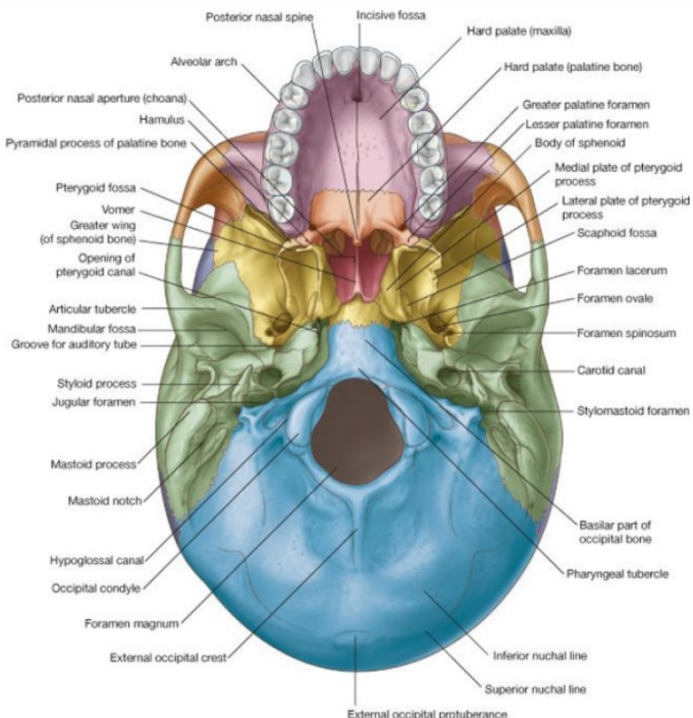
(a) Posteroinferior view



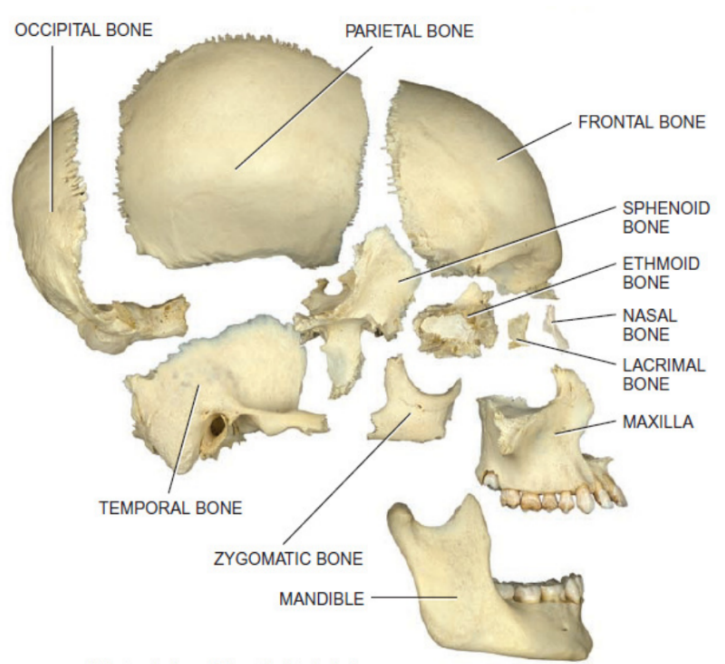
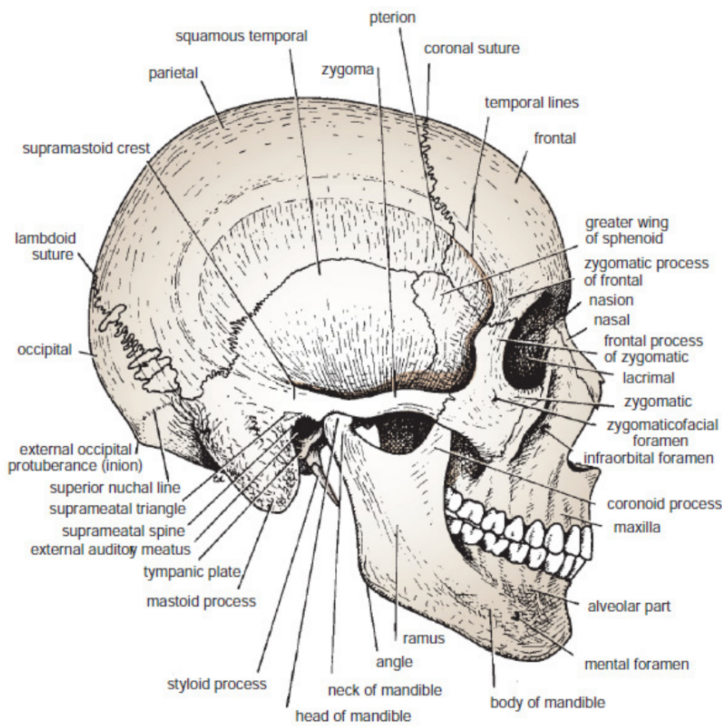
Drake: *Gray's Anatomy for Students*, 2nd Edition.



(a) Medial view of sagittal section

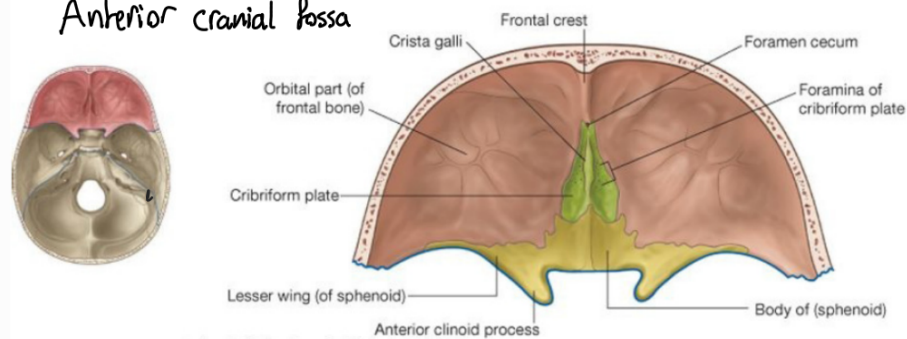


(a) Superior view of sphenoid bone in floor of cranium

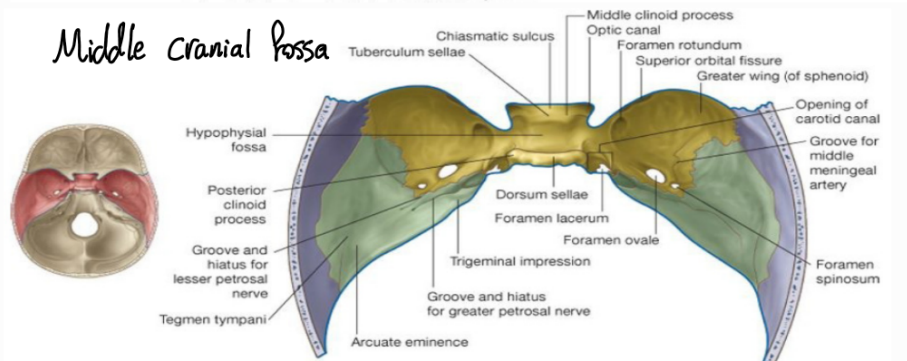


(e) Lateral view of disarticulated skull

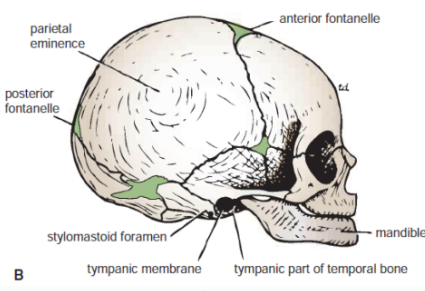
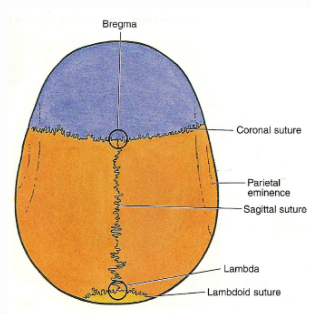
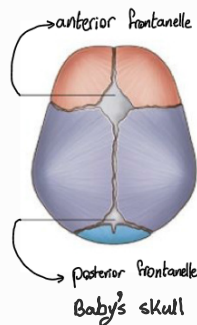
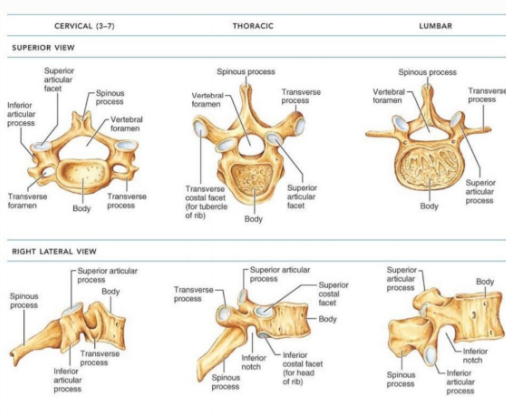
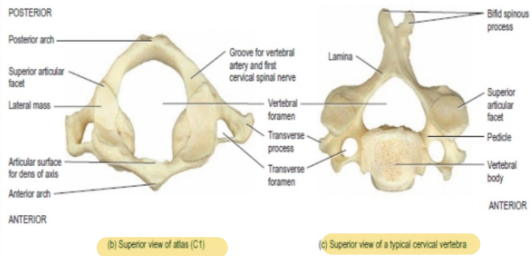
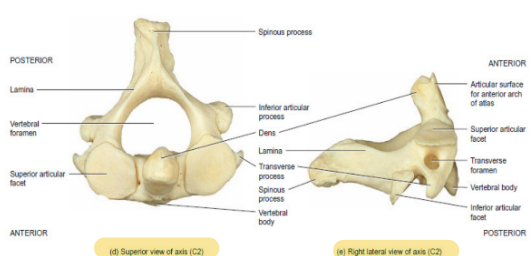
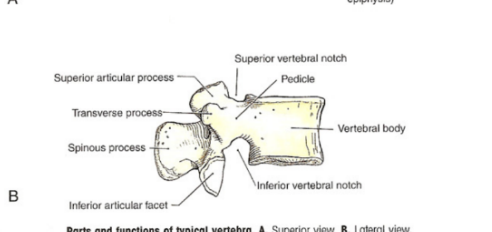
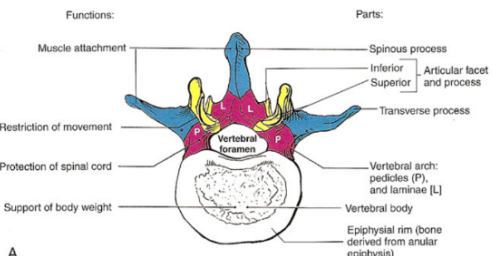
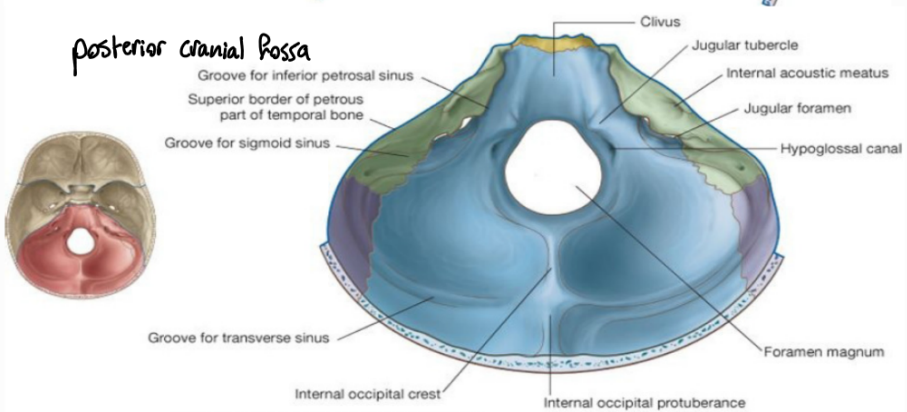
Anterior cranial fossa



Middle cranial fossa

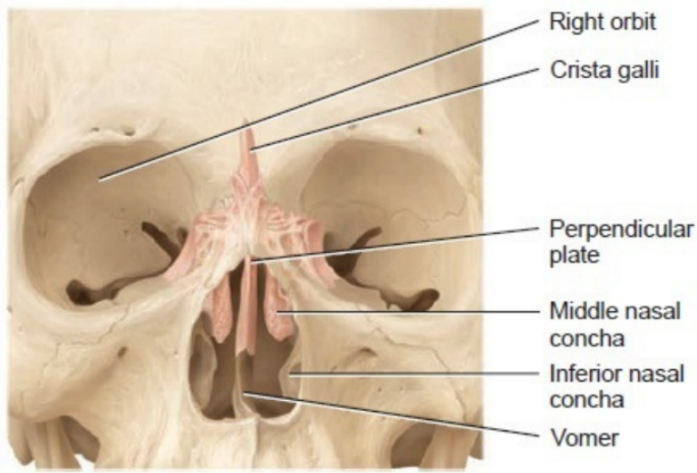


posterior cranial fossa

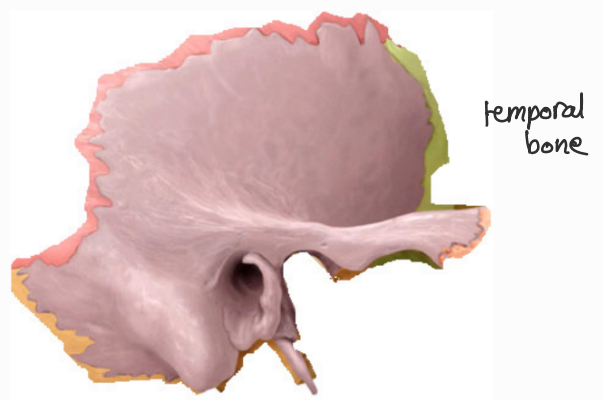


Baby's skull

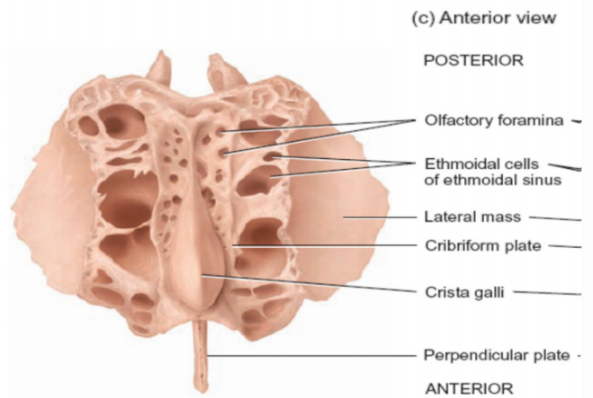
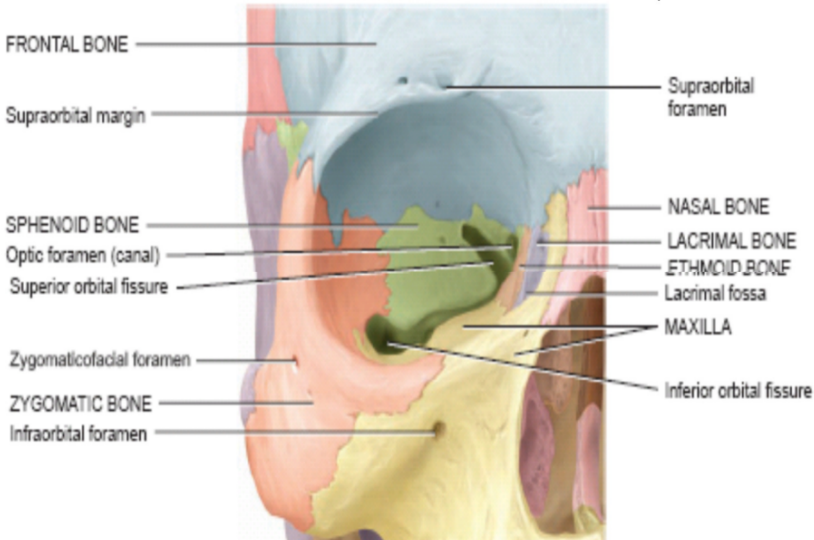
Ethmoid



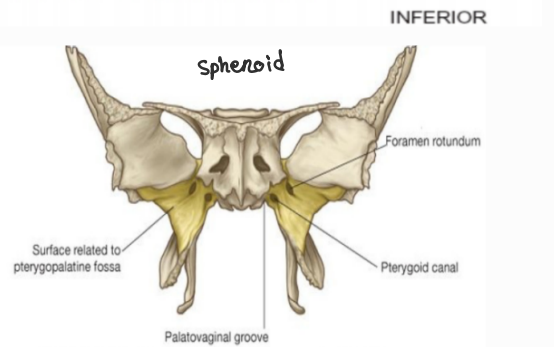
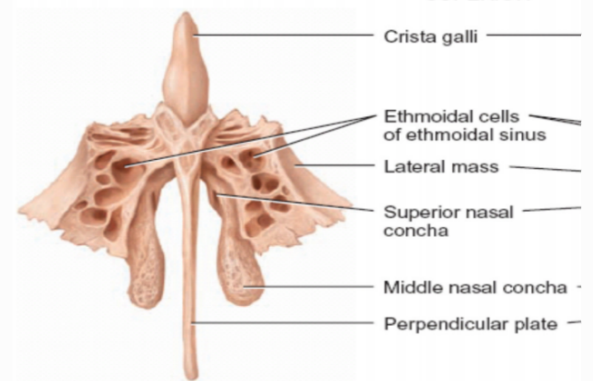
Anterior view of position of ethmoid bone in skull



temporal bone

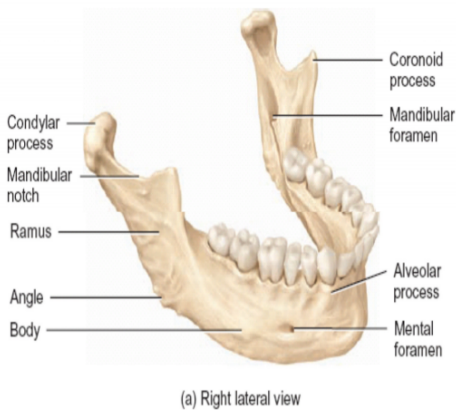
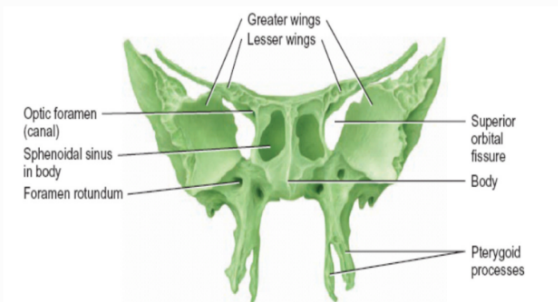
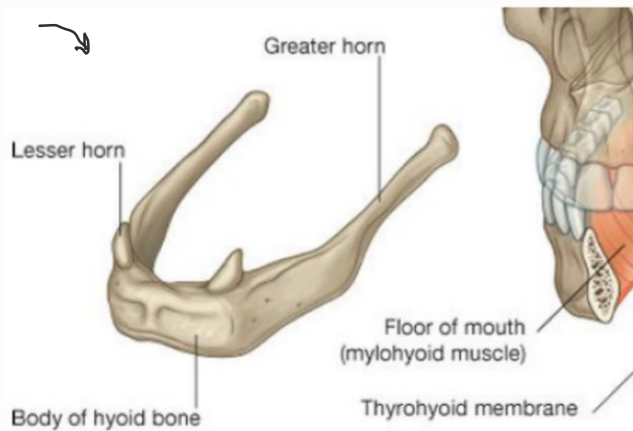


Ethmoid bone

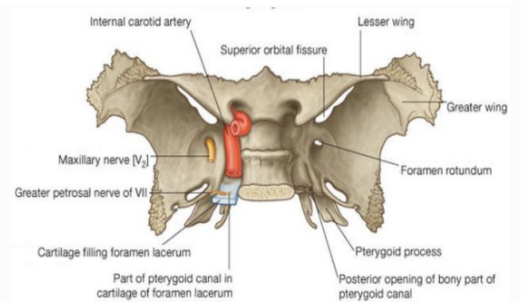
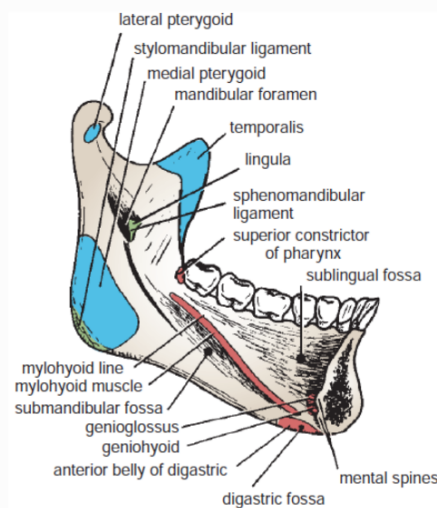


sphenoid

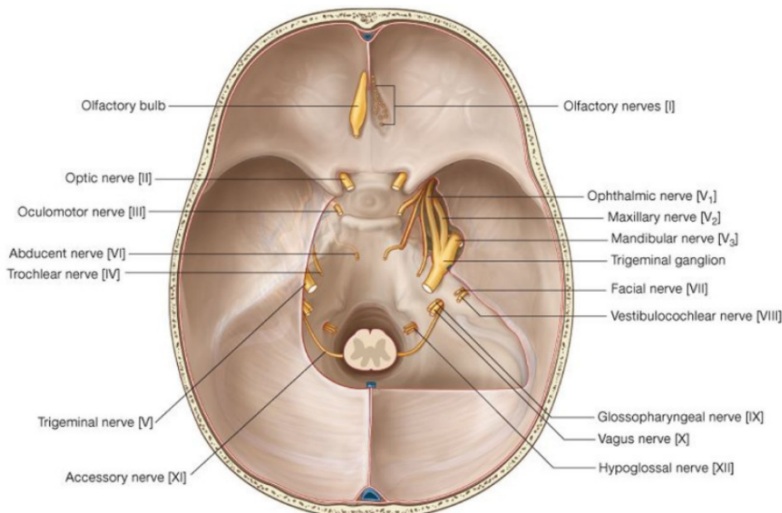
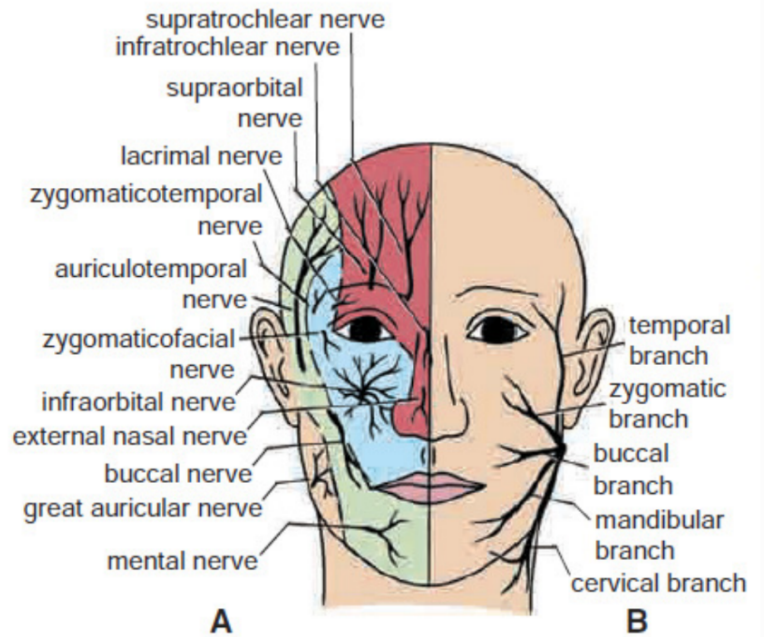
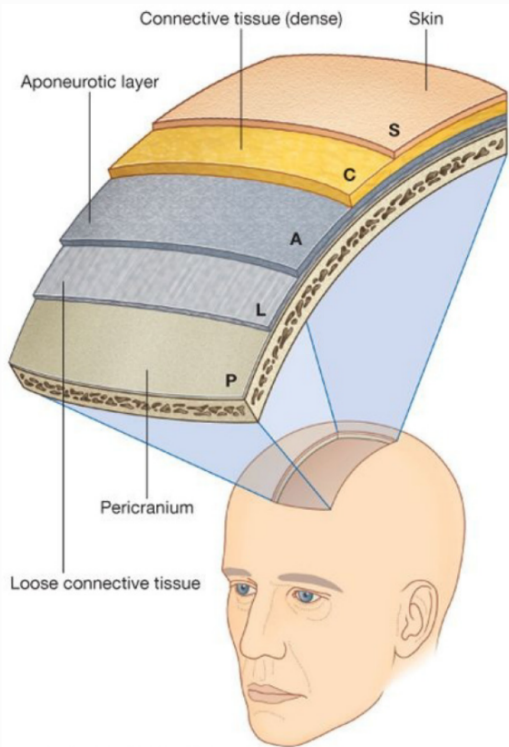
Parts of hyoid



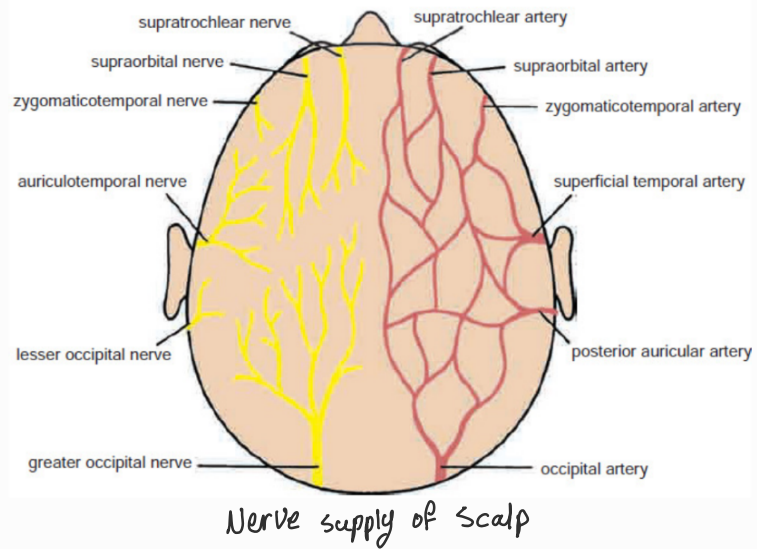
(a) Right lateral view



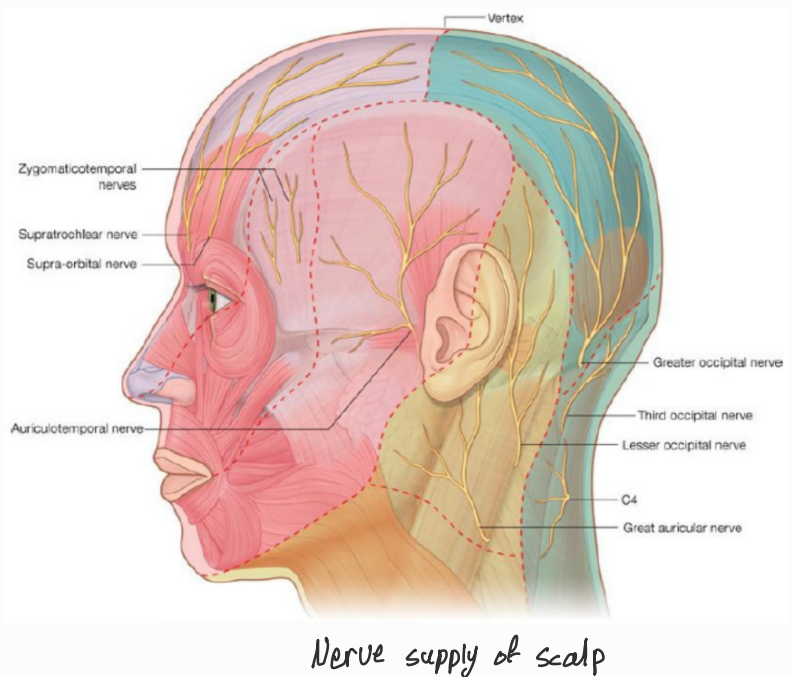
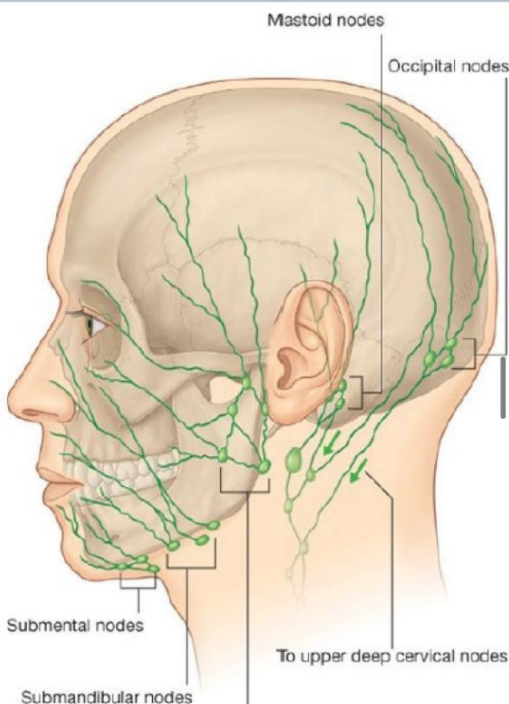
face & scalp



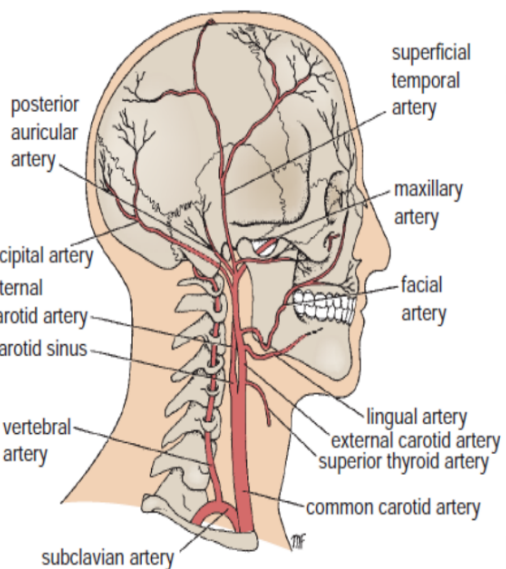
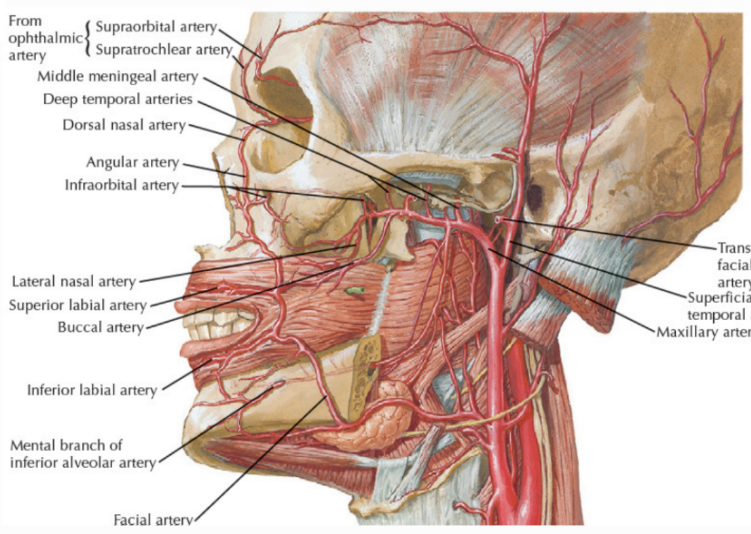
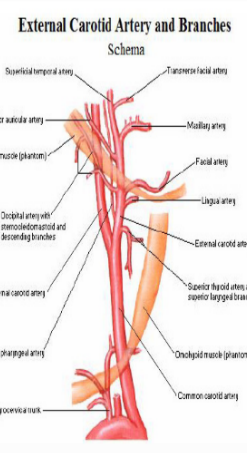
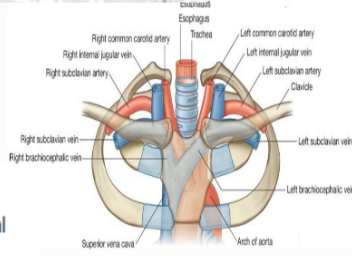
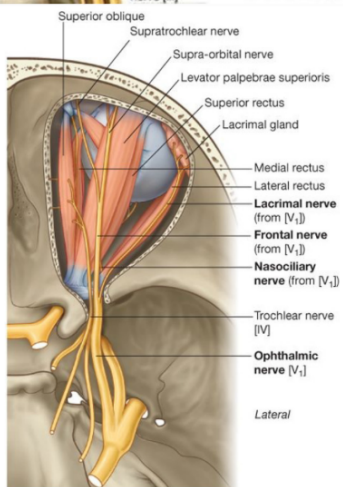
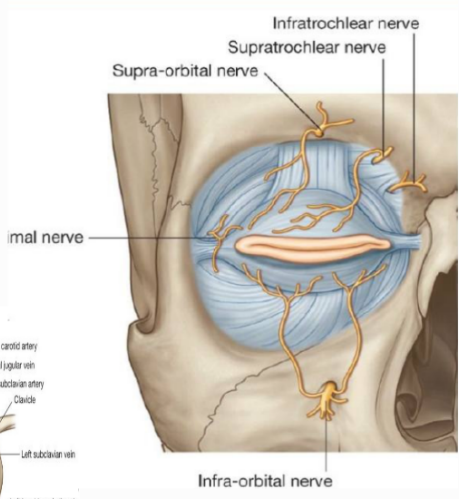
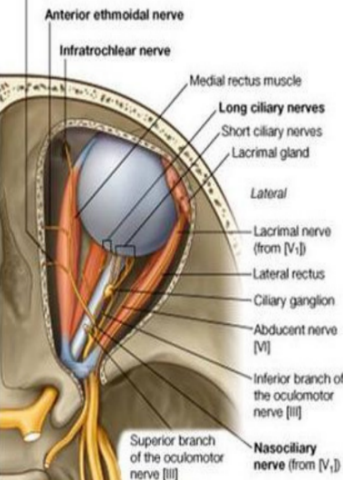
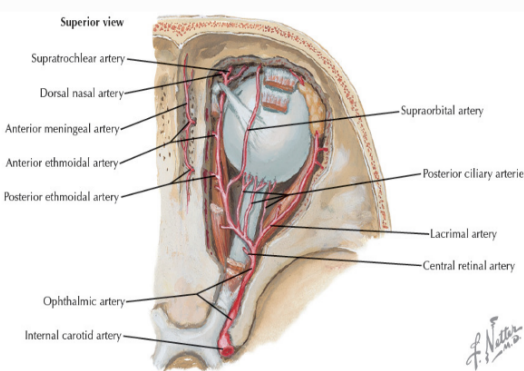
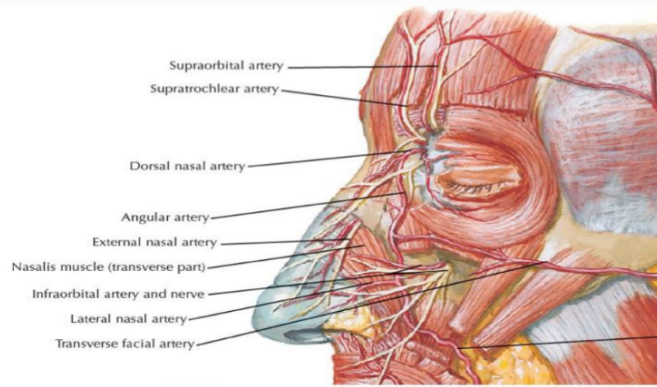
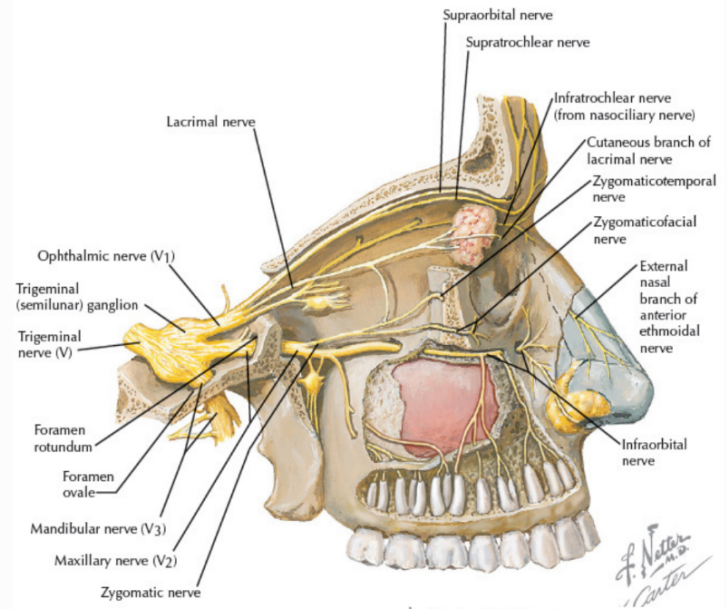
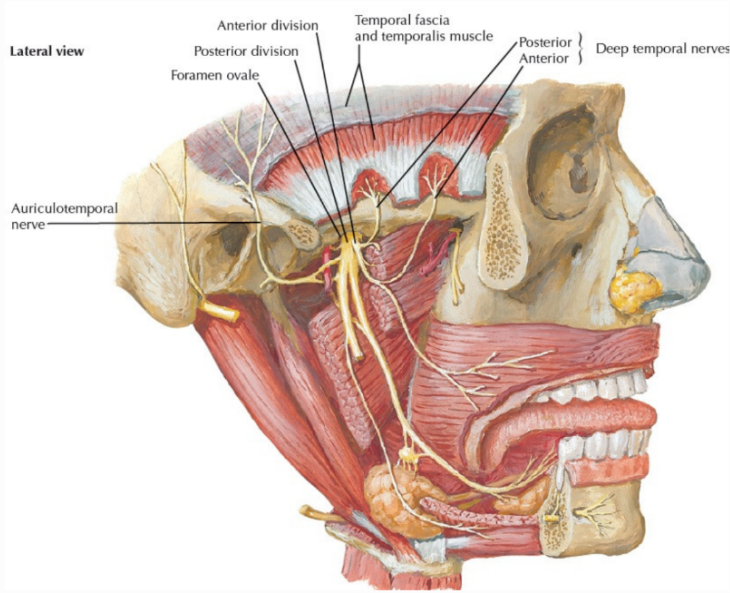
cranial nerves and their foramina



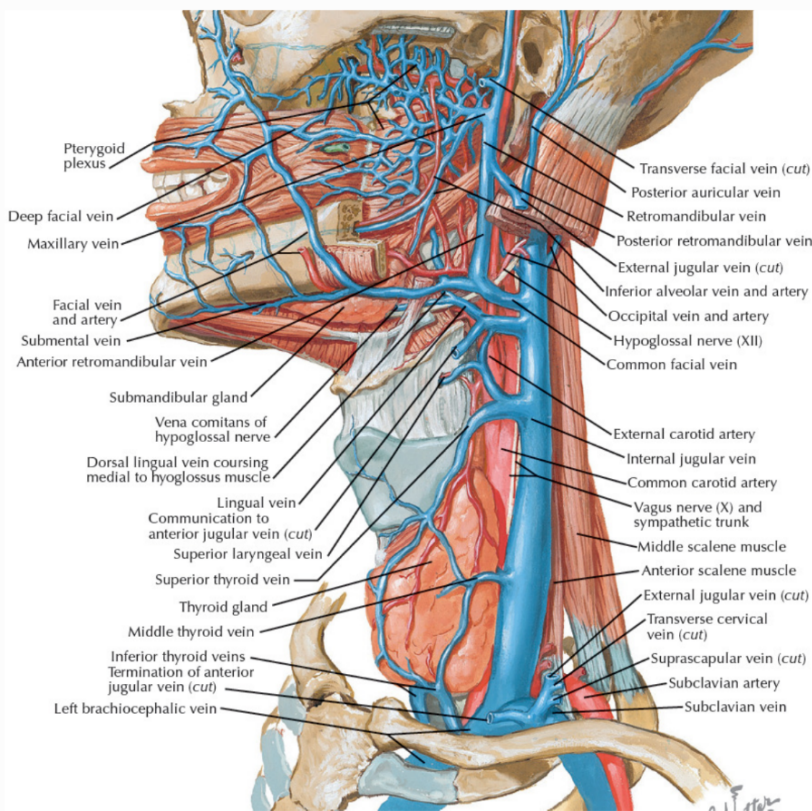
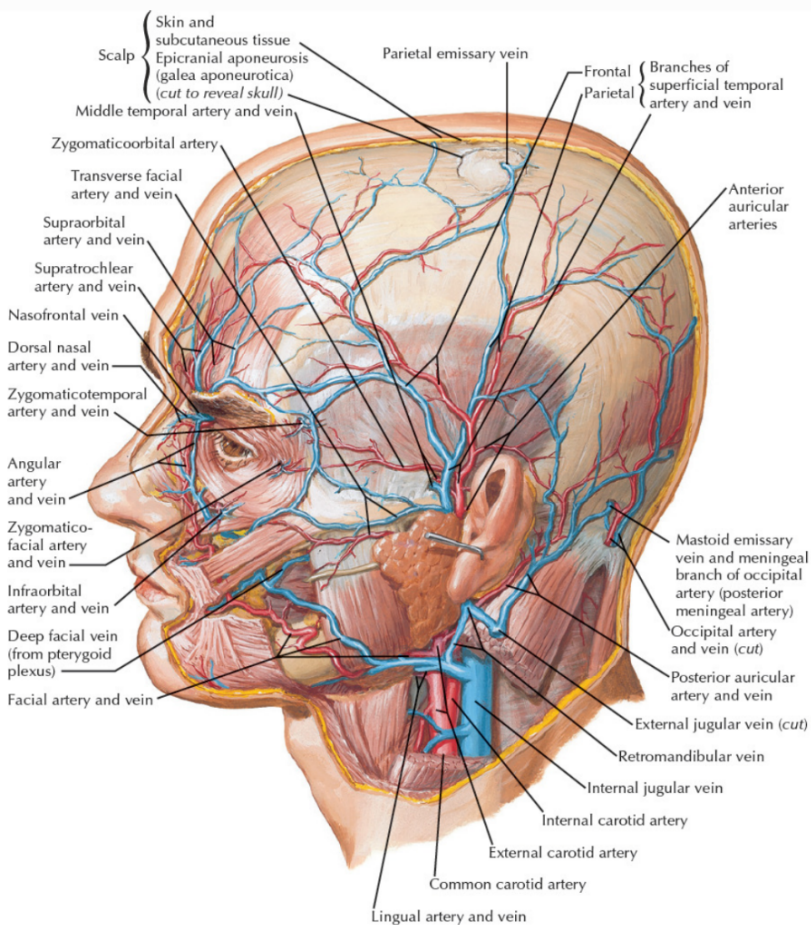
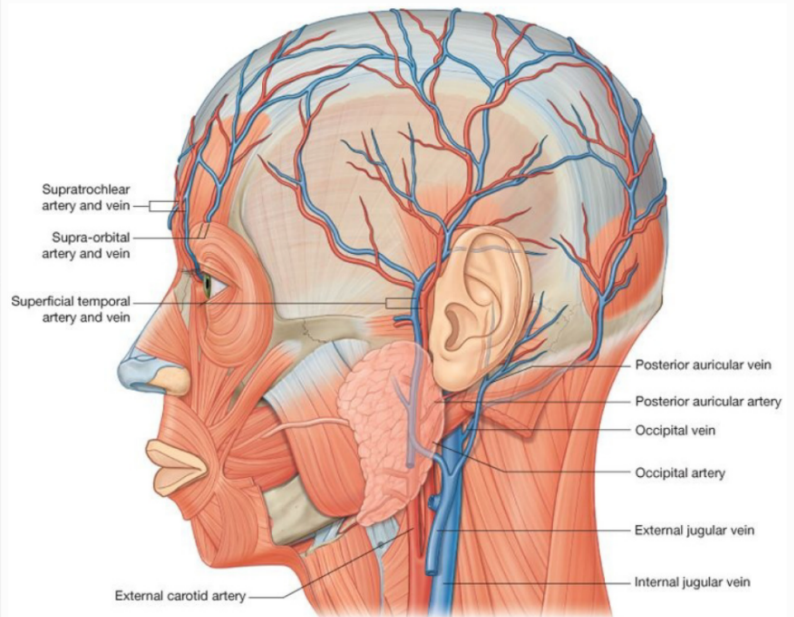
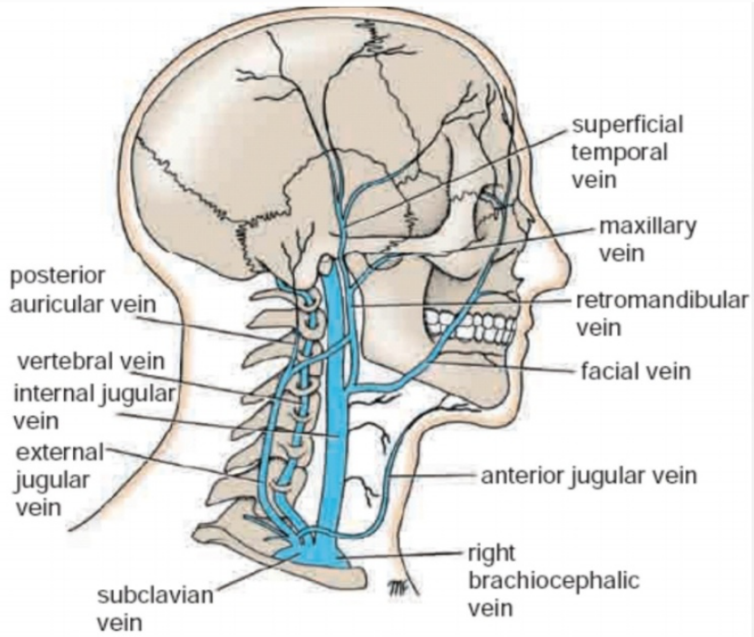
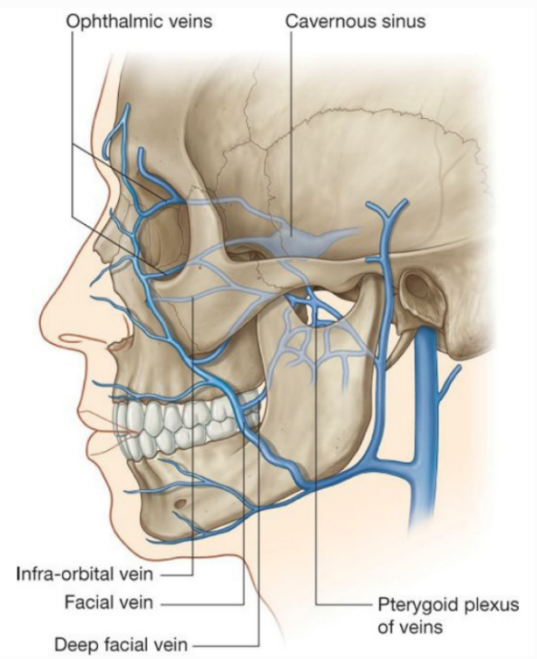
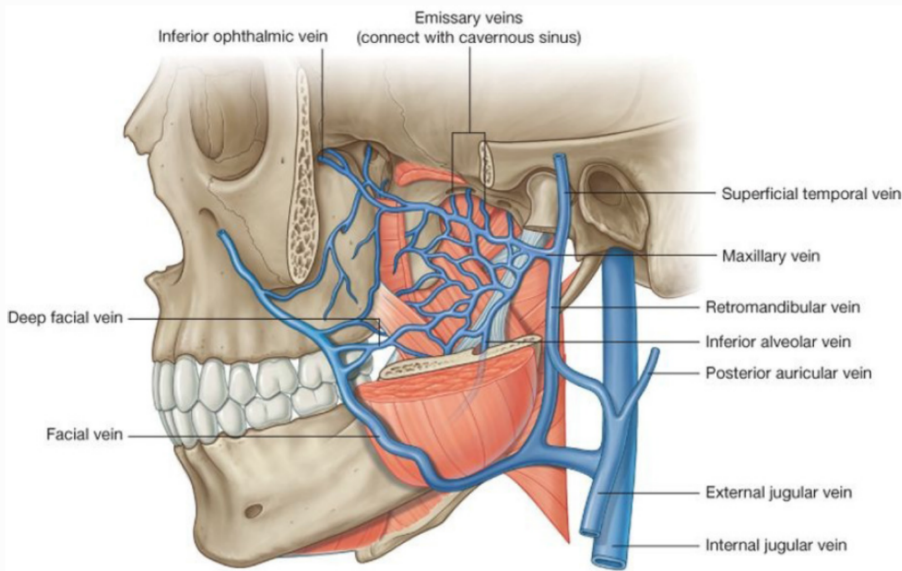
lymph nodes of face



arteries and nerves:

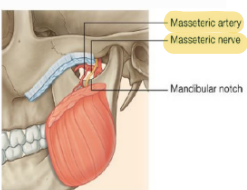
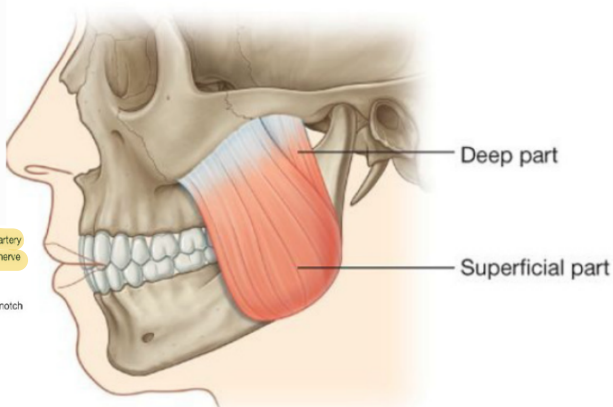
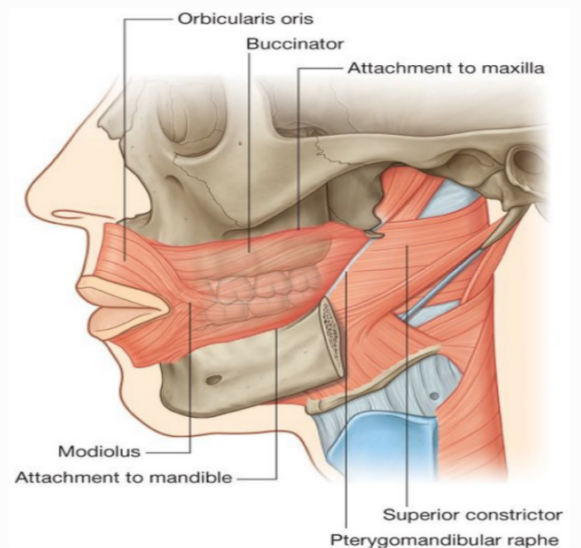
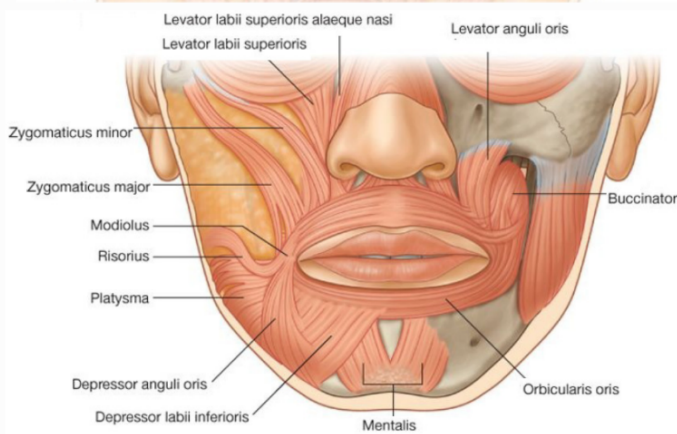
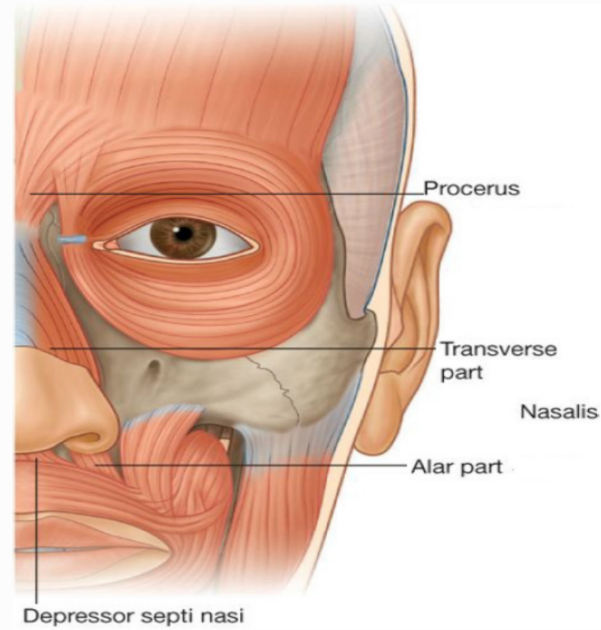
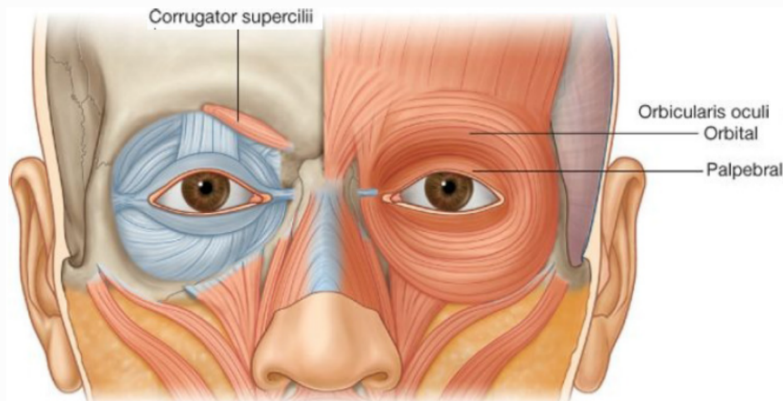
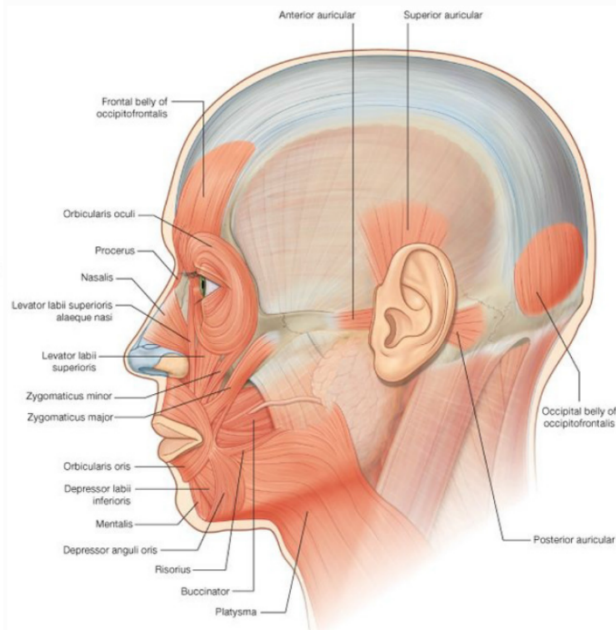
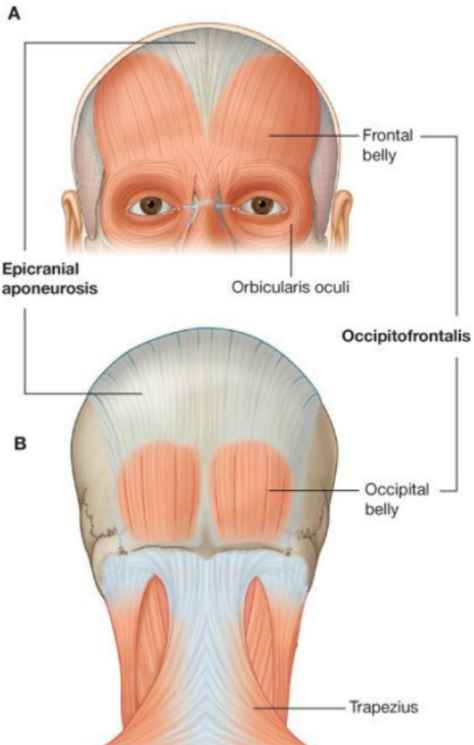


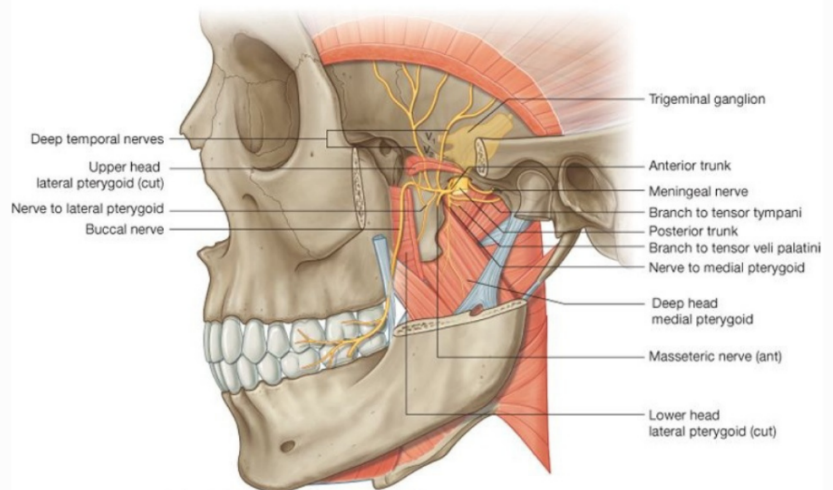
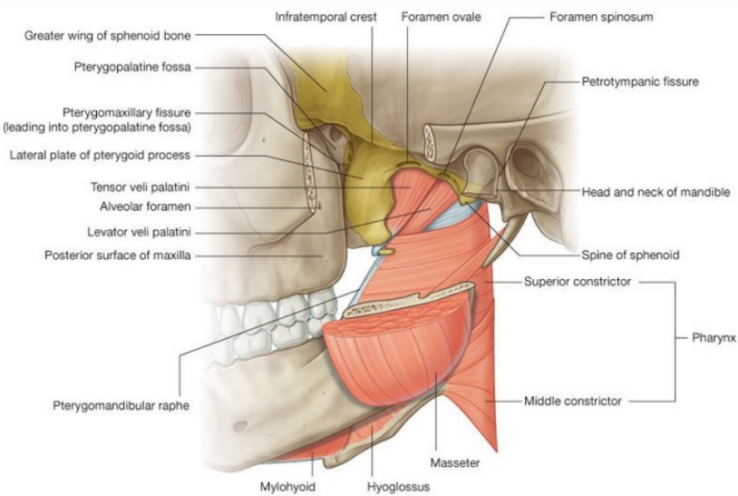
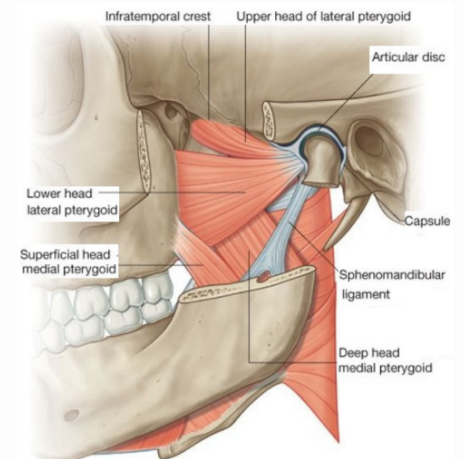
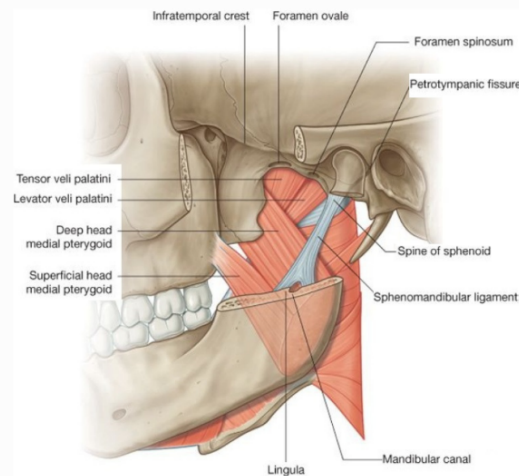
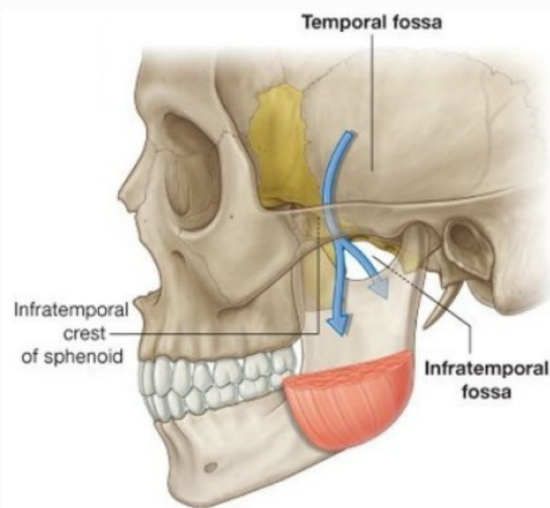
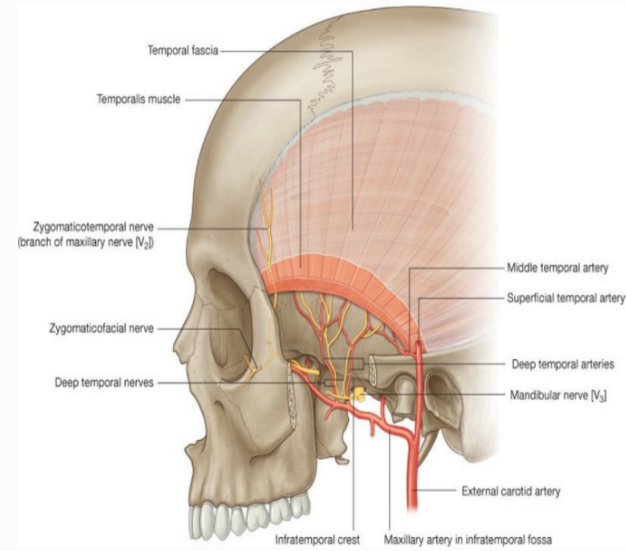
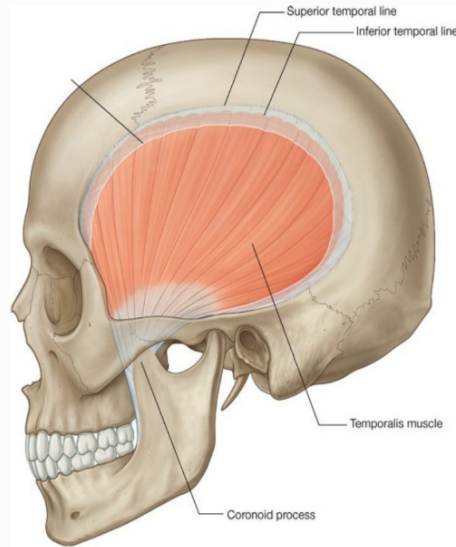
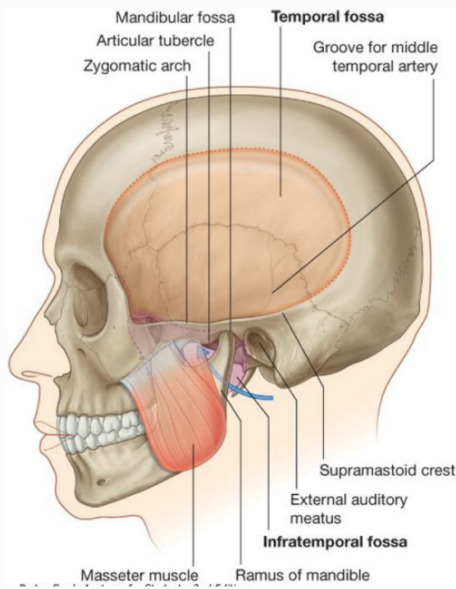
Veins



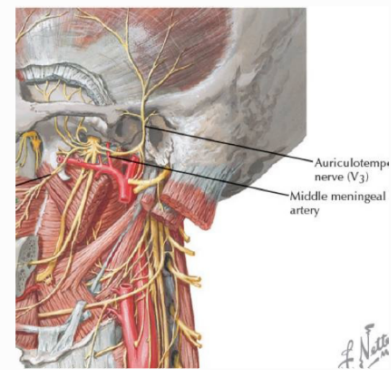
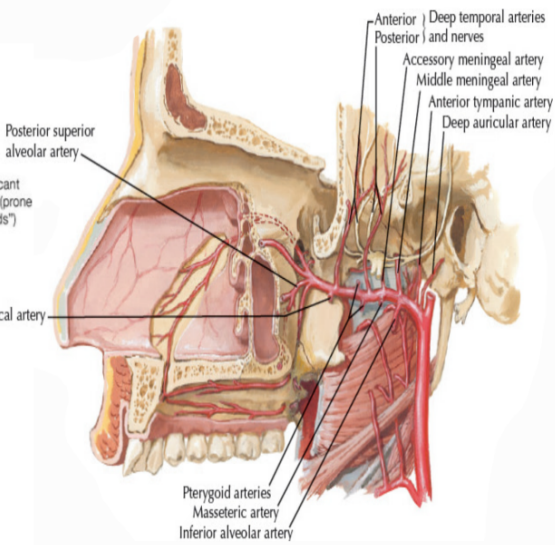
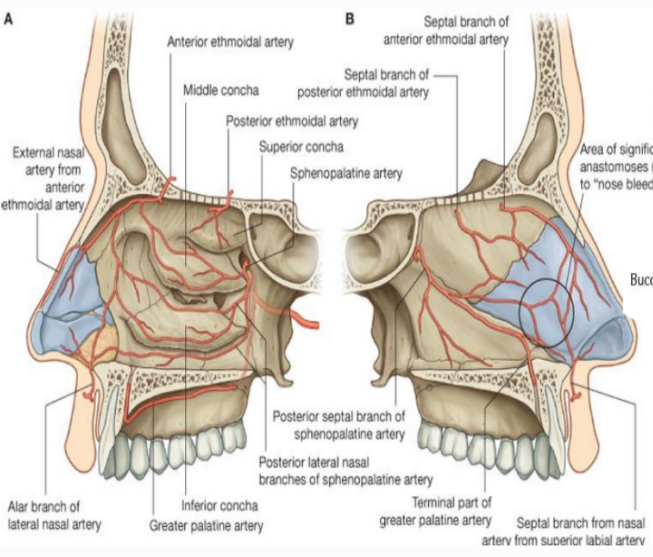
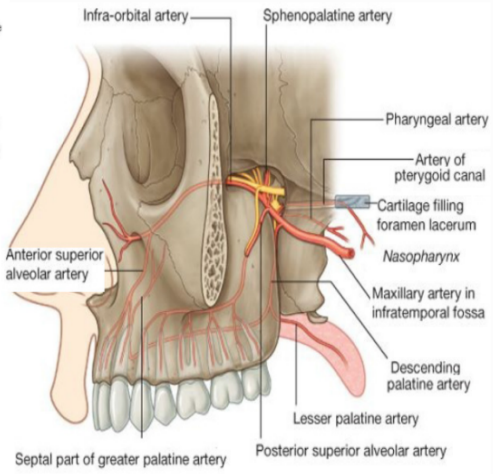
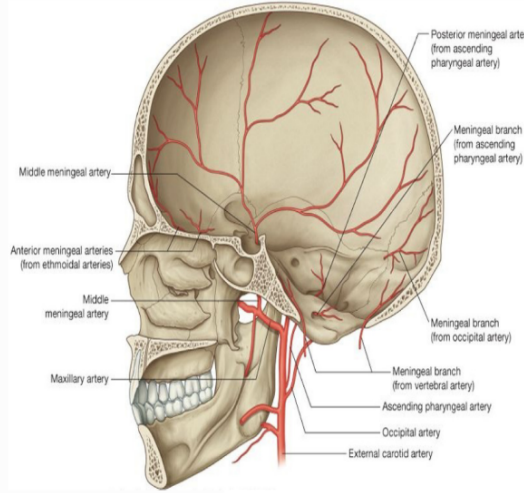
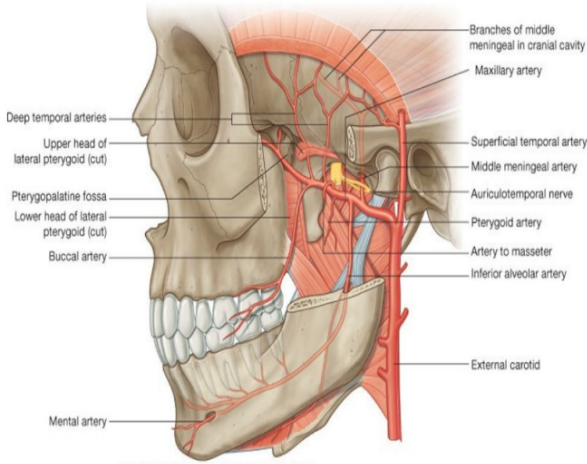
Temporal & Infratemporal fossa

* Muscles:

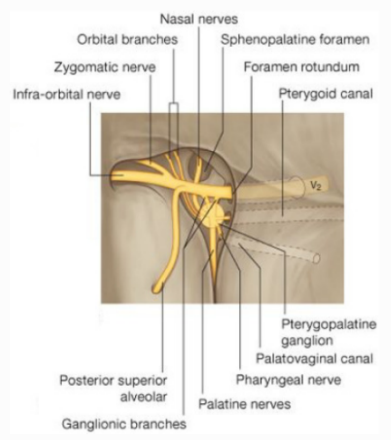
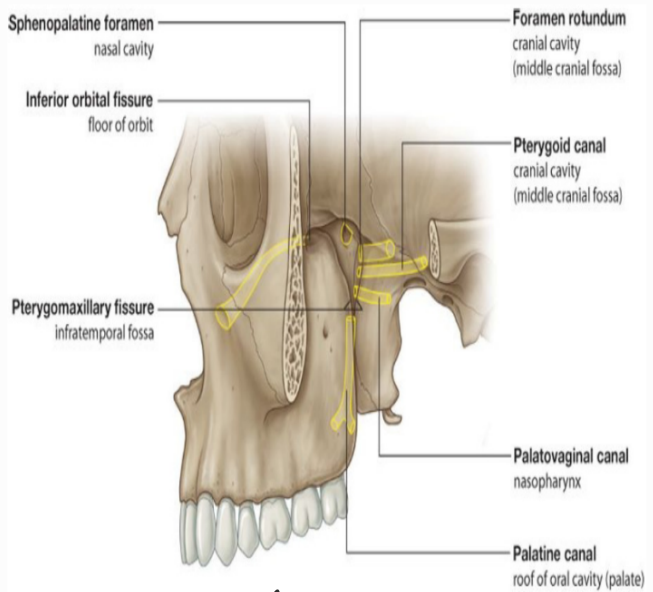
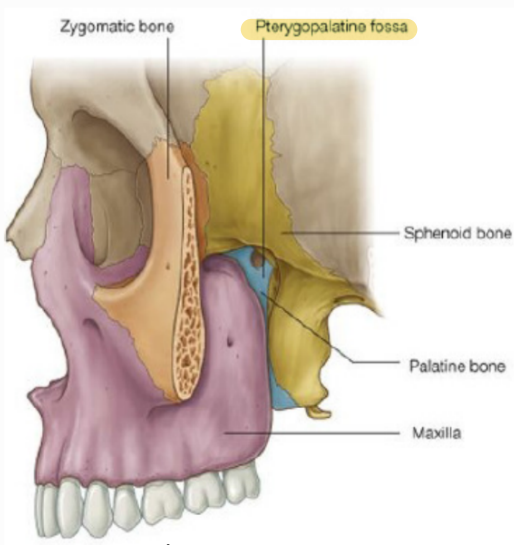




arteries:



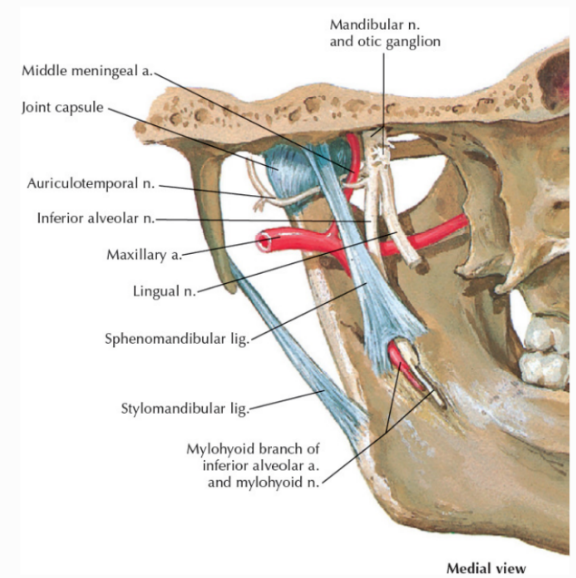
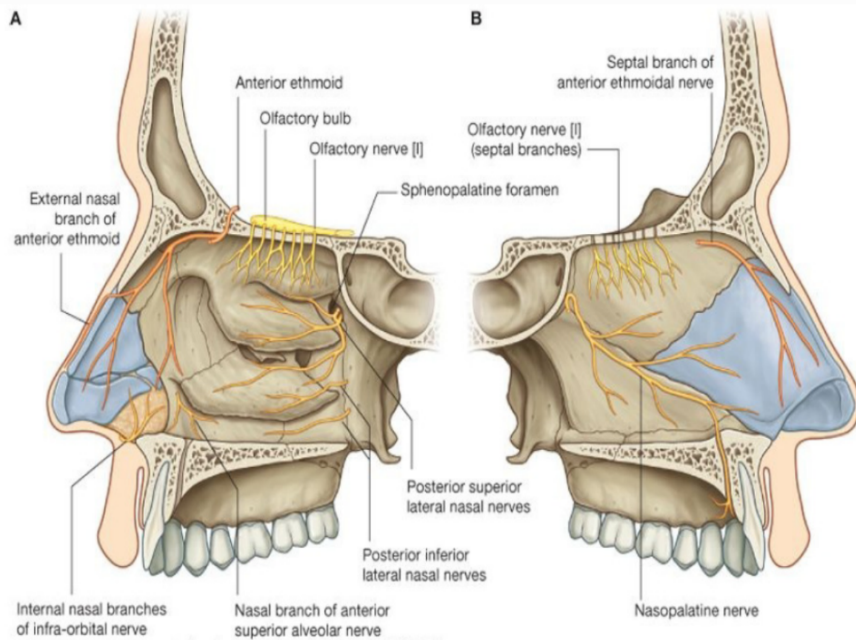
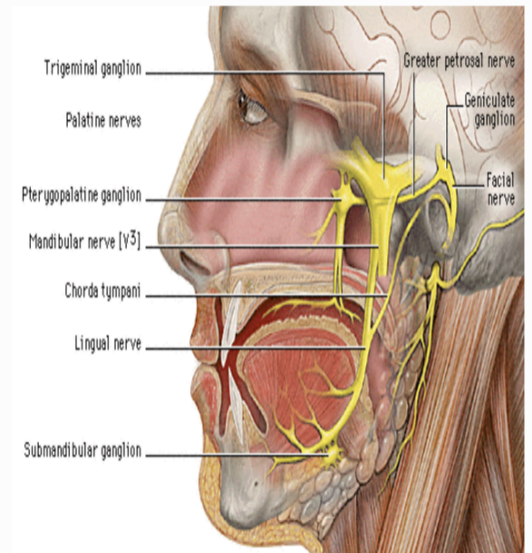
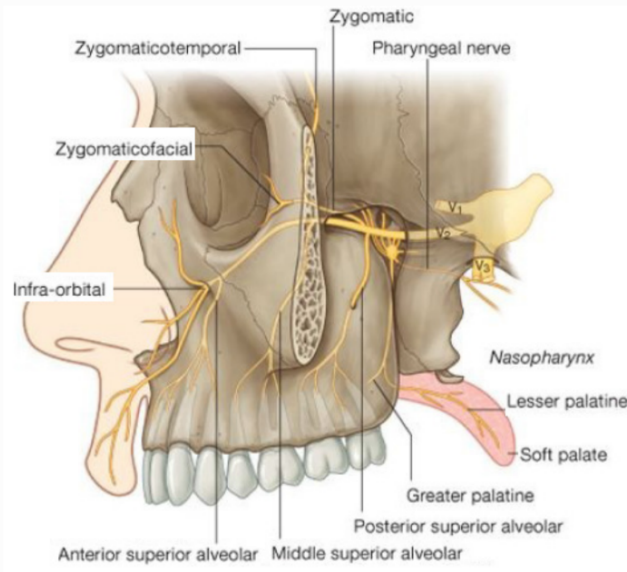
Pterygo palatine Fossa :



Boundaries ↗

Gateways ↗

* Nerves



* TMJ:

